

A13914

Leader in Biomolecular Solutions for Life Science



# CUEDC2 Rabbit pAb

Catalog No.: A13914

## Basic Information

### Observed MW

32kDa

### Calculated MW

32kDa

### Category

Polyclonal Antibody

### Applications

WB, ELISA

### Cross-Reactivity

Rat

## Background

Predicted to enable ubiquitin binding activity. Acts upstream of or within negative regulation of cytokine production involved in inflammatory response and negative regulation of macrophage cytokine production. Located in cytosol; nuclear membrane; and nucleoplasm.

## Recommended Dilutions

**WB** 1:500 - 1:2000

**ELISA** Recommended starting concentration is 1 µg/mL. Please optimize the concentration based on your specific assay requirements.

## Immunogen Information

### Gene ID

79004

### Swiss Prot

Q9H467

### Immunogen

Recombinant fusion protein containing a sequence corresponding to amino acids 1-150 of human CUEDC2 (NP\_076945.2).

### Synonyms

C10orf66; bA18I14.5; CUEDC2

## Contact

 [www.abclonal.com](http://www.abclonal.com)

## Product Information

### Source

Rabbit

### Isotype

IgG

### Purification

Affinity purification

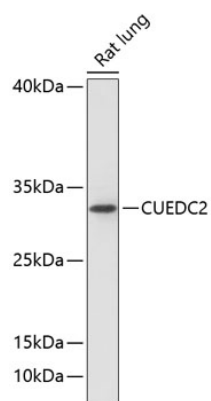
### Storage

Store at -20°C. Avoid freeze / thaw cycles.

Buffer: PBS with 0.01% thimerosal, 50% glycerol, pH 7.3.

## Validation Data

---



Western blot analysis of lysates from rat lung, using CUEDC2 Rabbit pAb (A13914) at 1:1000 dilution.

Secondary antibody: HRP-conjugated Goat anti-Rabbit IgG (H+L) (AS014) at 1:10000 dilution.

Lysates/proteins: 25µg per lane.

Blocking buffer: 3% nonfat dry milk in TBST.

Detection: ECL Basic Kit (RM00020).

Exposure time: 90s.