

A13883

Leader in Biomolecular Solutions for Life Science



CEP70 Rabbit pAb

Catalog No.: A13883

Basic Information

Observed MW

72kDa

Calculated MW

70kDa

Category

Polyclonal Antibody

Applications

WB,ELISA

Cross-Reactivity

Human,Rat

Background

Enables identical protein binding activity. Predicted to be involved in cilium assembly and regulation of microtubule cytoskeleton organization. Located in centrosome.

Recommended Dilutions

WB 1:500 - 1:2000

ELISA Recommended starting concentration is 1 µg/mL. Please optimize the concentration based on your specific assay requirements.

Immunogen Information

Gene ID

80321

Swiss Prot

Q8NHQ1

Immunogen

Recombinant protein (or fragment). This information is considered to be commercially sensitive.

Synonyms

BITE; CEP70

Contact



www.abclonal.com

Product Information

Source

Rabbit

Isotype

IgG

Purification

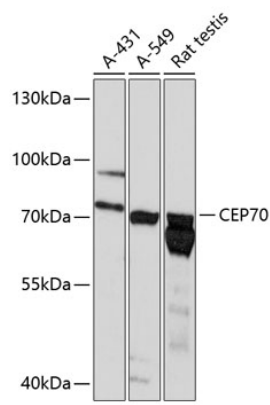
Affinity purification

Storage

Store at -20°C. Avoid freeze / thaw cycles.

Buffer: PBS with 0.01% thimerosal, 50% glycerol, pH7.3.

Validation Data



Western blot analysis of various lysates using CEP70 Rabbit pAb (A13883) at 1:3000 dilution. Secondary antibody: HRP-conjugated Goat anti-Rabbit IgG (H+L) (AS014) at 1:10000 dilution. Lysates/proteins: 25µg per lane. Blocking buffer: 3% nonfat dry milk in TBST. Detection: ECL Enhanced Kit (RM00021). Exposure time: 60s.