

A13850

Leader in Biomolecular Solutions for Life Science



CDHR5 Rabbit pAb

Catalog No.: A13850

1 Publications

Basic Information

Observed MW

88kDa

Calculated MW

88kDa

Category

Polyclonal Antibody

Applications

WB,ELISA

Cross-Reactivity

Mouse,Rat

Background

This gene is a novel mucin-like gene that is a member of the cadherin superfamily. While encoding nonpolymorphic tandem repeats rich in proline, serine and threonine similar to mucin proteins, the gene also contains sequence encoding calcium-binding motifs found in all cadherins. The role of the hybrid extracellular region and the specific function of this protein have not yet been determined. Alternatively spliced transcript variants encoding different isoforms have been described.

Recommended Dilutions

WB 1:500 - 1:2000

ELISA Recommended starting concentration is 1 µg/mL. Please optimize the concentration based on your specific assay requirements.

Immunogen Information

Gene ID
53841

Swiss Prot
Q9HBB8

Immunogen

Recombinant protein (or fragment). This information is considered to be commercially sensitive.

Synonyms

MLPCDH; MUCDHL; MUPCDH; MU-PCDH; CDHR5

Contact



www.abclonal.com

Product Information

Source
Rabbit

Isotype
IgG

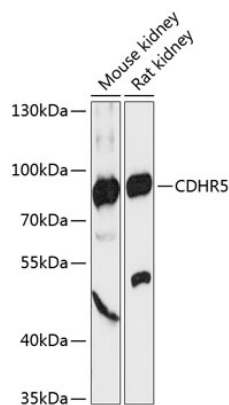
Purification
Affinity purification

Storage

Store at -20°C. Avoid freeze / thaw cycles.

Buffer: PBS with 0.01% thimerosal, 50% glycerol, pH7.3.

Validation Data



Western blot analysis of various lysates using CDHR5 Rabbit pAb (A13850) at 1:3000 dilution.
Secondary antibody: HRP-conjugated Goat anti-Rabbit IgG (H+L) (AS014) at 1:10000 dilution.
Lysates/proteins: 25µg per lane.
Blocking buffer: 3% nonfat dry milk in TBST.
Detection: ECL Basic Kit (RM00020).
Exposure time: 90s.