

A13847

Leader in Biomolecular Solutions for Life Science



BORA Rabbit pAb

Catalog No.: A13847

Basic Information

Observed MW

90kDa

Calculated MW

61kDa

Category

Polyclonal Antibody

Applications

WB,ELISA

Cross-Reactivity

Human

Background

BORA is an activator of the protein kinase Aurora A (AURKA; MIM 603072), which is required for centrosome maturation, spindle assembly, and asymmetric protein localization during mitosis (Hutterer et al., 2006 [PubMed 16890155]).

Recommended Dilutions

WB 1:500 - 1:2000

ELISA Recommended starting concentration is 1 µg/mL. Please optimize the concentration based on your specific assay requirements.

Immunogen Information

Gene ID

79866

Swiss Prot

Q6PGQ7

Immunogen

Recombinant fusion protein containing a sequence corresponding to amino acids 320-619 of human BORA (NP_079084.3).

Synonyms

C13orf34; BORA

Contact



www.abclonal.com

Product Information

Source

Rabbit

Isotype

IgG

Purification

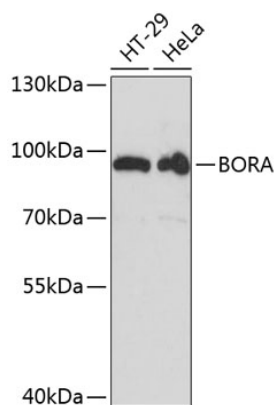
Affinity purification

Storage

Store at -20°C. Avoid freeze / thaw cycles.

Buffer: PBS with 0.01% thimerosal, 50% glycerol, pH7.3.

Validation Data



Western blot analysis of various lysates using BORA Rabbit pAb (A13847) at 1:3000 dilution.

Secondary antibody: HRP-conjugated Goat anti-Rabbit IgG (H+L) (AS014) at 1:10000 dilution.

Lysates/proteins: 25µg per lane.

Blocking buffer: 3% nonfat dry milk in TBST.

Detection: ECL Basic Kit (RM00020).

Exposure time: 40s.