

A13839

Leader in Biomolecular Solutions for Life Science



CRACR2A Rabbit pAb

Catalog No.: A13839

Basic Information

Observed MW

45kDa

Calculated MW

83kDa

Category

Polyclonal Antibody

Applications

WB,ELISA

Cross-Reactivity

Human,Mouse,Rat

Background

Enables GTPase activity and calcium ion binding activity. Involved in several processes, including activation of store-operated calcium channel activity; positive regulation of JNK cascade; and store-operated calcium entry. Located in several cellular components, including Golgi apparatus; Weibel-Palade body; and immunological synapse.

Recommended Dilutions

WB 1:500 - 1:2000

ELISA Recommended starting concentration is 1 µg/mL. Please optimize the concentration based on your specific assay requirements.

Immunogen Information

Gene ID

84766

Swiss Prot

Q9BSW2

Immunogen

Recombinant protein (or fragment). This information is considered to be commercially sensitive.

Synonyms

RAB46; EFCAB4B; CRACR2A

Contact

 www.abclonal.com

Product Information

Source

Rabbit

Isotype

IgG

Purification

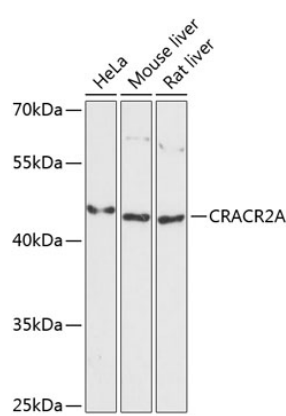
Affinity purification

Storage

Store at -20°C. Avoid freeze / thaw cycles.

Buffer: PBS with 0.01% thimerosal, 50% glycerol, pH7.3.

Validation Data



Western blot analysis of various lysates using CRACR2A Rabbit pAb (A13839) at 1:3000 dilution.
Secondary antibody: HRP-conjugated Goat anti-Rabbit IgG (H+L) (AS014) at 1:10000 dilution.
Lysates/proteins: 25µg per lane.
Blocking buffer: 3% nonfat dry milk in TBST.
Detection: ECL Basic Kit (RM00020).
Exposure time: 90s.