

A13810

Leader in Biomolecular Solutions for Life Science



SLC4A10 Rabbit pAb

Catalog No.: A13810

Basic Information

Observed MW

126kDa

Calculated MW

126kDa

Category

Polyclonal Antibody

Applications

WB, ELISA

Cross-Reactivity

Mouse

Background

This gene belongs to a small family of sodium-coupled bicarbonate transporters (NCBTs) that regulate the intracellular pH of neurons, the secretion of bicarbonate ions across the choroid plexus, and the pH of the brain extracellular fluid. The protein encoded by this gene was initially identified as a sodium-driven chloride bicarbonate exchanger (NCBE) though there is now evidence that its sodium/bicarbonate cotransport activity is independent of any chloride ion countertransport under physiological conditions. This gene is now classified as a member A10 of the SLC4 family of transmembrane solute carriers. Alternative splicing results in multiple transcript variants encoding distinct isoforms.

Recommended Dilutions

WB 1:1000 - 1:5000

ELISA Recommended starting concentration is 1 µg/mL. Please optimize the concentration based on your specific assay requirements.

Immunogen Information

Gene ID

57282

Swiss Prot

Q6U841

Immunogen

Recombinant fusion protein containing a sequence corresponding to amino acids 640-725 of human SLC4A10 (NP_001171486.1).

Synonyms

NCBE; NBCn2; SLC4A10

Contact

 www.abclonal.com

Product Information

Source

Rabbit

Isotype

IgG

Purification

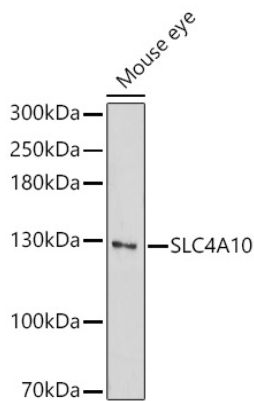
Affinity purification

Storage

Store at -20°C. Avoid freeze / thaw cycles.

Buffer: PBS with 0.01% thimerosal, 50% glycerol, pH 7.3.

Validation Data



Western blot analysis of lysates from Mouse eye using SLC4A10 Rabbit pAb (A13810) at 1:3000 dilution.

Secondary antibody: HRP-conjugated Goat anti-Rabbit IgG (H+L) (AS014) at 1:10000 dilution.

Lysates/proteins: 25 µg per lane.

Blocking buffer: 3% nonfat dry milk in TBST.

Detection: ECL Basic Kit (RM00020).

Exposure time: 90s.