

A13806

Leader in Biomolecular Solutions for Life Science



CARD6 Rabbit pAb

Catalog No.: A13806

Basic Information

Observed MW

116kDa

Calculated MW

116kDa

Category

Polyclonal Antibody

Applications

WB, ELISA

Cross-Reactivity

Human

Background

This gene encodes a protein that contains a caspase recruitment domain (CARD), an antiparallel six-helical bundle that mediates homotypic protein-protein interactions. The encoded protein is a microtubule-associated protein that has been shown to interact with receptor-interacting protein kinases and positively modulate signal transduction pathways converging on activation of the inducible transcription factor NF- κ B.

Recommended Dilutions

WB 1:500 - 1:2000

ELISA Recommended starting concentration is 1 μ g/mL. Please optimize the concentration based on your specific assay requirements.

Immunogen Information

Gene ID

84674

Swiss Prot

Q9BX69

Immunogen

Recombinant protein (or fragment). This information is considered to be commercially sensitive.

Synonyms

CINCIN1; CARD6

Contact



www.abclonal.com

Product Information

Source

Rabbit

Isotype

IgG

Purification

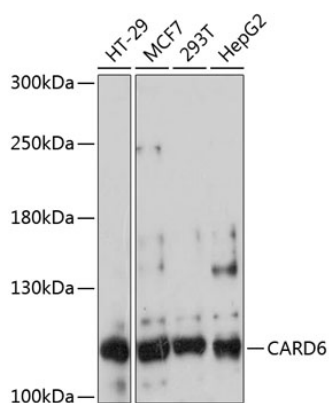
Affinity purification

Storage

Store at -20°C. Avoid freeze / thaw cycles.

Buffer: PBS with 0.01% thimerosal, 50% glycerol, pH 7.3.

Validation Data



Western blot analysis of various lysates using CARD6 Rabbit pAb (A13806) at 1:3000 dilution.
Secondary antibody: HRP-conjugated Goat anti-Rabbit IgG (H+L) (AS014) at 1:10000 dilution.
Lysates/proteins: 25µg per lane.
Blocking buffer: 3% nonfat dry milk in TBST.
Detection: ECL Basic Kit (RM00020).
Exposure time: 30s.