

A13757

Leader in Biomolecular Solutions for Life Science



FICD Rabbit pAb

Catalog No.: A13757

Basic Information

Observed MW

51kDa

Calculated MW

52kDa

Category

Polyclonal Antibody

Applications

WB,ELISA

Cross-Reactivity

Human,Mouse,Rat

Background

Enables several functions, including ATP binding activity; Hsp70 protein binding activity; and chaperone binding activity. Involved in protein adenylation; regulation of IRE1-mediated unfolded protein response; and response to endoplasmic reticulum stress. Is integral component of endoplasmic reticulum membrane.

Recommended Dilutions

WB 1:500 - 1:2000

ELISA Recommended starting concentration is 1 µg/mL. Please optimize the concentration based on your specific assay requirements.

Immunogen Information

Gene ID

11153

Swiss Prot

Q9BVA6

Immunogen

Recombinant protein (or fragment). This information is considered to be commercially sensitive.

Synonyms

HYPE; HIP13; UNQ3041; FICD

Contact



www.abclonal.com

Product Information

Source

Rabbit

Isotype

IgG

Purification

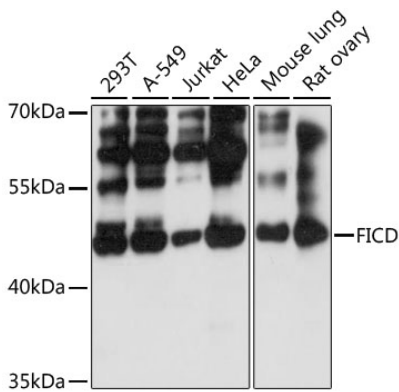
Affinity purification

Storage

Store at -20°C. Avoid freeze / thaw cycles.

Buffer: PBS with 0.01% thimerosal, 50% glycerol, pH7.3.

Validation Data



Western blot analysis of various lysates using FICD Rabbit pAb (A13757) at 1:3000 dilution.
Secondary antibody: HRP-conjugated Goat anti-Rabbit IgG (H+L) (AS014) at 1:10000 dilution.
Lysates/proteins: 25µg per lane.
Blocking buffer: 3% nonfat dry milk in TBST.
Detection: ECL Basic Kit (RM00020).
Exposure time: 1s.