

A13718

Leader in Biomolecular Solutions for Life Science



PIH1D1 Rabbit pAb

Catalog No.: A13718

Basic Information

Observed MW

38kDa

Calculated MW

32kDa

Category

Polyclonal Antibody

Applications

WB, ELISA

Cross-Reactivity

Human

Background

Enables several functions, including RNA polymerase I core promoter sequence-specific DNA binding activity; enzyme binding activity; and phosphoprotein binding activity. Involved in several processes, including box C/D snoRNP assembly; positive regulation of signal transduction; and regulation of cellular protein metabolic process. Located in cytoplasm and nucleolus. Part of R2TP complex and pre-snoRNP complex.

Recommended Dilutions

WB 1:500 - 1:2000

ELISA Recommended starting concentration is 1 µg/mL. Please optimize the concentration based on your specific assay requirements.

Immunogen Information

Gene ID

55011

Swiss Prot

Q9NWS0

Immunogen

Recombinant fusion protein containing a sequence corresponding to amino acids 1-290 of human PIH1D1 (NP_060386.1).

Synonyms

Pih1; MOT48; NOP17; DNAAF14; PIH1D1

Contact

 www.abclonal.com

Product Information

Source

Rabbit

Isotype

IgG

Purification

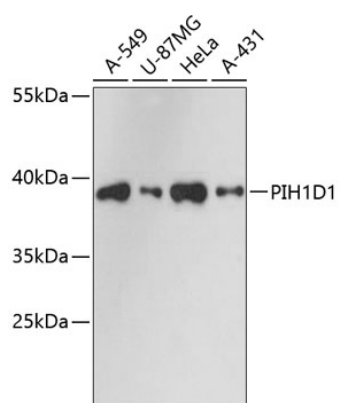
Affinity purification

Storage

Store at -20°C. Avoid freeze / thaw cycles.

Buffer: PBS with 0.01% thimerosal, 50% glycerol, pH7.3.

Validation Data



Western blot analysis of various lysates using PIH1D1 Rabbit pAb (A13718) at 1:3000 dilution.

Secondary antibody: HRP-conjugated Goat anti-Rabbit IgG (H+L) (AS014) at 1:10000 dilution.

Lysates/proteins: 25µg per lane.

Blocking buffer: 3% nonfat dry milk in TBST.

Detection: ECL Basic Kit (RM00020).

Exposure time: 90s.