

A13716

Leader in Biomolecular Solutions for Life Science



# DAPP1 Rabbit pAb

Catalog No.: A13716

## Basic Information

### Observed MW

28kDa

### Calculated MW

32kDa

### Category

Polyclonal Antibody

### Applications

WB,IF/ICC,ELISA

### Cross-Reactivity

Human,Mouse,Rat

## Background

Enables phosphatidylinositol-3,4,5-trisphosphate binding activity and phosphatidylinositol-3,4-bisphosphate binding activity. Predicted to be involved in signal transduction. Located in plasma membrane.

## Recommended Dilutions

**WB** 1:500 - 1:2000

**IF/ICC** 1:50 - 1:200

## Immunogen Information

### Gene ID

27071

### Swiss Prot

Q9UN19

### Immunogen

A synthetic peptide corresponding to a sequence within amino acids 100-273 of human DAPP1 (NP\_055210.2).

### Synonyms

BAM32; DAPP1

## Contact



[www.abclonal.com](http://www.abclonal.com)

## Product Information

### Source

Rabbit

### Isotype

IgG

### Purification

Affinity purification

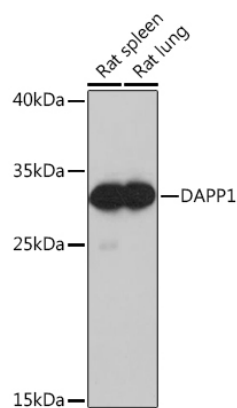
### Storage

Store at -20°C. Avoid freeze / thaw cycles.

Buffer: PBS with 0.01% thimerosal, 50% glycerol, pH7.3.

## Validation Data

---



Western blot analysis of various lysates using DAPP1 Rabbit pAb (A13716) at 1:1000 dilution.

Secondary antibody: HRP Goat Anti-Rabbit IgG (H+L) (AS014) at 1:10000 dilution.

Lysates/proteins: 25µg per lane.

Blocking buffer: 3% nonfat dry milk in TBST.

Detection: ECL Basic Kit (RM00020).

Exposure time: 10s.