

A13705

Leader in Biomolecular Solutions for Life Science



# RND1 Rabbit pAb

Catalog No.: A13705

## Basic Information

---

### Observed MW

26kDa

### Calculated MW

26kDa

### Category

Polyclonal Antibody

### Applications

WB,IF/ICC,ELISA

### Cross-Reactivity

Mouse,Rat

## Background

---

This gene encodes a protein that belongs to the Rho GTPase family. Members of this family regulate the organization of the actin cytoskeleton in response to extracellular growth factors. A similar protein in rat interacts with a microtubule regulator to control axon extension.

## Recommended Dilutions

---

**WB** 1:500 - 1:2000

**IF/ICC** 1:50 - 1:200

**ELISA** Recommended starting concentration is 1 µg/mL. Please optimize the concentration based on your specific assay requirements.

## Immunogen Information

---

### Gene ID

27289

### Swiss Prot

Q92730

### Immunogen

A synthetic peptide corresponding to a sequence within amino acids 133-232 of human RND1 (NP\_055285.1).

### Synonyms

ARHS; RHO6; RHOS; RND1

## Contact

---

 [www.abclonal.com](http://www.abclonal.com)

## Product Information

---

### Source

Rabbit

### Isotype

IgG

### Purification

Affinity purification

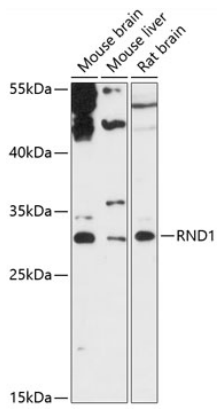
### Storage

Store at -20°C. Avoid freeze / thaw cycles.

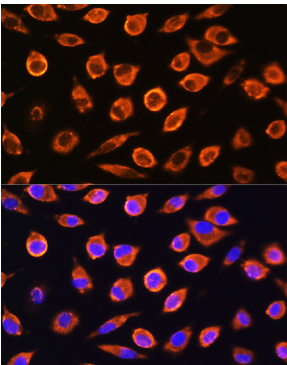
Buffer: PBS with 0.01% thimerosal, 50% glycerol, pH7.3.

## Validation Data

---



Western blot analysis of various lysates using RND1 Rabbit pAb (A13705) at 1:3000 dilution.



Immunofluorescence analysis of L929 cells using RND1 Rabbit pAb (A13705) at dilution of 1:100. Secondary antibody: Cy3-conjugated Goat anti-Rabbit IgG (H+L) (AS007) at 1:500 dilution. Blue: DAPI for nuclear staining.