

A1363

Leader in Biomolecular Solutions for Life Science



Albumin Rabbit pAb

Catalog No.: A1363 **8 Publications**

Basic Information

Observed MW

69kDa

Calculated MW

69kDa

Category

Polyclonal Antibody

Applications

WB,IF/ICC,ELISA,IF-P

Cross-Reactivity

Human,Mouse,Rat

Background

This gene encodes the most abundant protein in human blood. This protein functions in the regulation of blood plasma colloid osmotic pressure and acts as a carrier protein for a wide range of endogenous molecules including hormones, fatty acids, and metabolites, as well as exogenous drugs. Additionally, this protein exhibits an esterase-like activity with broad substrate specificity. The encoded preproprotein is proteolytically processed to generate the mature protein. A peptide derived from this protein, EPI-X4, is an endogenous inhibitor of the CXCR4 chemokine receptor.

Recommended Dilutions

WB 1:500 - 1:1000

IF/ICC 1:50 - 1:200

IF-P 1:50 - 1:200

ELISA Recommended starting concentration is 1 µg/mL. Please optimize the concentration based on your specific assay requirements.

Immunogen Information

Gene ID

213

Swiss Prot

P02768

Immunogen

Recombinant protein (or fragment). This information is considered to be commercially sensitive.

Synonyms

HSA; FDAHT; PRO0883; PRO0903; PRO1341; Albumin

Product Information

Source

Rabbit

Isotype

IgG

Purification

Affinity purification

Storage

Store at -20°C. Avoid freeze / thaw cycles.

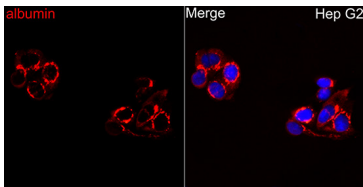
Buffer: PBS, pH 7.3, containing 50% glycerol. Preserved with Proclin300 or sodium azide. May contain 0.05% BSA as specified on the Certificate of Analysis.

Contact

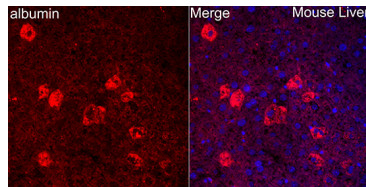


www.abclonal.com

Validation Data



Immunofluorescence analysis of Hep G2 cells using Albumin Rabbit pAb (A1363) at dilution of 1:200 (40x lens). Secondary antibody: Cy3-conjugated Goat anti-Rabbit IgG (H+L) (AS007) at 1:500 dilution. Blue: DAPI for nuclear staining.



Immunofluorescence analysis of paraffin-embedded mouse liver using Albumin/ALB Rabbit pAb (A1363) at dilution of 1:200 (40x lens). Secondary antibody: Cy3-conjugated Goat anti-Rabbit IgG (H+L) (AS007) at 1:500 dilution. Blue: DAPI for nuclear staining.