

A13612

Leader in Biomolecular Solutions for Life Science



# Thymidine Kinase 1 Rabbit mAb

Catalog No.: A13612

Recombinant

## Basic Information

### Observed MW

26kDa

### Calculated MW

25kDa

### Category

SMab Recombinant Monoclonal  
Antibody

### Applications

WB, ELISA

### Cross-Reactivity

Human

### CloneNo number

ARC0719

## Background

The protein encoded by this gene is a cytosolic enzyme that catalyzes the addition of a gamma-phosphate group to thymidine. This creates dTMP and is the first step in the biosynthesis of dTTP, which is one component required for DNA replication. The encoded protein, whose levels fluctuate depending on the cell cycle stage, can act as a low activity dimer or a high activity tetramer. High levels of this protein have been used as a biomarker for diagnosing and categorizing many types of cancers.

## Recommended Dilutions

**WB** 1:500 - 1:1000

**ELISA** Recommended starting concentration is 1 µg/mL. Please optimize the concentration based on your specific assay requirements.

## Immunogen Information

### Gene ID

7083

### Swiss Prot

P04183

### Immunogen

A synthetic peptide corresponding to a sequence within amino acids 1-100 of human Thymidine Kinase 1 (P04183).

### Synonyms

TK2; Thymidine Kinase 1

## Contact



[www.abclonal.com](http://www.abclonal.com)

## Product Information

### Source

Rabbit

### Isotype

IgG

### Purification

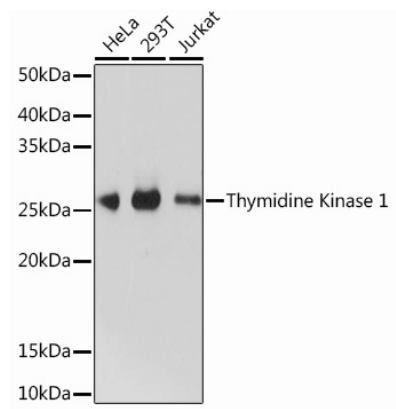
Affinity purification

### Storage

Store at -20°C. Avoid freeze / thaw cycles.

Buffer: PBS with 0.02% sodium azide, 0.05% BSA, 50% glycerol, pH 7.3.

## Validation Data



Western blot analysis of various lysates using Thymidine Kinase 1 Rabbit mAb (A13612) at 1:1000 dilution.  
Secondary antibody: HRP-conjugated Goat anti-Rabbit IgG (H+L) (AS014) at 1:10000 dilution.  
Lysates/proteins: 25µg per lane.  
Blocking buffer: 3% nonfat dry milk in TBST.  
Detection: ECL Basic Kit (RM00020).  
Exposure time: 10s.