

A13578

Leader in Biomolecular Solutions for Life Science



TIMM17A Rabbit pAb

Catalog No.: A13578

Basic Information

Observed MW

18kDa

Calculated MW

18kDa

Category

Polyclonal Antibody

Applications

WB,IF/ICC,ELISA

Cross-Reactivity

Human,Mouse

Background

Predicted to contribute to protein transmembrane transporter activity. Predicted to be involved in protein import into mitochondrial matrix. Located in mitochondrial inner membrane and nucleoplasm. Is integral component of mitochondrial inner membrane. Part of TIM23 mitochondrial import inner membrane translocase complex.

Recommended Dilutions

WB 1:500 - 1:2000

IF/ICC 1:50 - 1:200

Immunogen Information

Gene ID

10440

Swiss Prot

Q99595

Immunogen

Recombinant fusion protein containing a sequence corresponding to amino acids 1-171 of human TIMM17A (NP_006326.1).

Synonyms

TIM17; TIM17A; TIMM17A

Contact



www.abclonal.com

Product Information

Source

Rabbit

Isotype

IgG

Purification

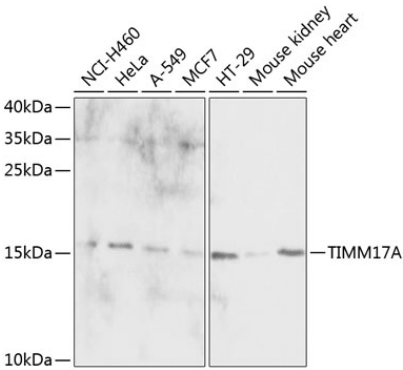
Affinity purification

Storage

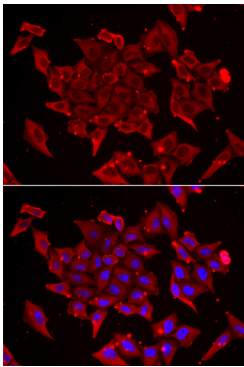
Store at -20°C. Avoid freeze / thaw cycles.

Buffer: PBS with 0.02% sodium azide,50% glycerol,pH7.3.

Validation Data



Western blot analysis of extracts of various cell lines, using TIMM17A antibody (A13578) at 1:1000 dilution.
Secondary antibody: HRP Goat Anti-Rabbit IgG (H+L) (AS014) at 1:10000 dilution.
Lysates/proteins: 25µg per lane.
Blocking buffer: 3% nonfat dry milk in TBST.
Detection: ECL Basic Kit (RM00020).
Exposure time: 30s.



Immunofluorescence analysis of U2OS cells using TIMM17A antibody (A13578). Blue: DAPI for nuclear staining.