

A13518

Leader in Biomolecular Solutions for Life Science



HSPB8/HSP22 Rabbit mAb

Catalog No.: A13518

Recombinant

Basic Information

Observed MW

24kDa

Calculated MW

22kDa

Category

SMab Recombinant Monoclonal Antibody

Applications

WB,IF/ICC,ELISA

Cross-Reactivity

Human,Mouse,Rat

CloneNo number

ARC0715

Background

The protein encoded by this gene belongs to the superfamily of small heat-shock proteins containing a conservative alpha-crystallin domain at the C-terminal part of the molecule. The expression of this gene is induced by estrogen in estrogen receptor-positive breast cancer cells, and this protein also functions as a chaperone in association with Bag3, a stimulator of macroautophagy. Thus, this gene appears to be involved in regulation of cell proliferation, apoptosis, and carcinogenesis, and mutations in this gene have been associated with different neuromuscular diseases, including Charcot-Marie-Tooth disease.

Recommended Dilutions

WB	1:500 - 1:1000
IF/ICC	1:50 - 1:200

Immunogen Information

Gene ID

26353

Swiss Prot

Q9UJY1

Immunogen

A synthetic peptide corresponding to a sequence within amino acids 1-100 of human HSPB8/HSP22 (Q9UJY1).

Synonyms

H11; HMN2; CMT2L; DHMN2; E2IG1; HMN2A; HSP22; CRYAC; HSPB8/HSP22

Contact



www.abclonal.com

Product Information

Source

Rabbit

Isotype

IgG

Purification

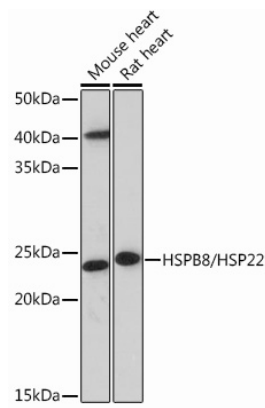
Affinity purification

Storage

Store at -20°C. Avoid freeze / thaw cycles.

Buffer: PBS with 0.02% sodium azide,0.05% BSA,50% glycerol,pH7.3.

Validation Data



Western blot analysis of extracts of various cell lines, using HSPB8/HSP22 Rabbit mAb (A13518) at 1:1000 dilution.

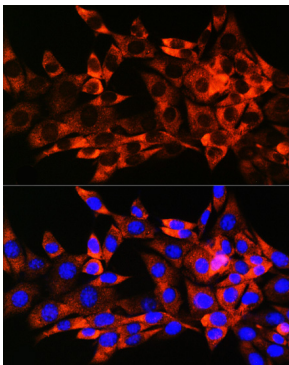
Secondary antibody: HRP Goat Anti-Rabbit IgG (H+L) (AS014) at 1:10000 dilution.

Lysates/proteins: 25µg per lane.

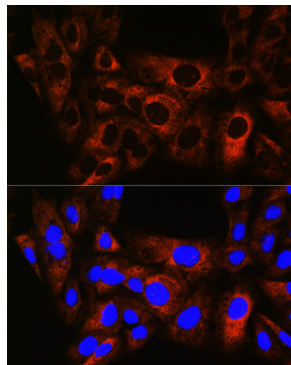
Blocking buffer: 3% nonfat dry milk in TBST.

Detection: ECL Basic Kit (RM00020).

Exposure time: 3min.



Immunofluorescence analysis of NIH-3T3 cells using HSPB8/HSP22 Rabbit mAb (A13518) at dilution of 1:100 (40x lens). Blue: DAPI for nuclear staining.



Immunofluorescence analysis of U-2 OS cells using HSPB8/HSP22 Rabbit mAb (A13518) at dilution of 1:100 (40x lens). Blue: DAPI for nuclear staining.