

A13497

Leader in Biomolecular Solutions for Life Science



# GTF2F2 Rabbit pAb

Catalog No.: A13497

## Basic Information

### Observed MW

28kDa

### Calculated MW

28kDa

### Category

Polyclonal Antibody

### Applications

WB,IHC-P,IF/ICC,ELISA

### Cross-Reactivity

Human,Mouse

## Background

Predicted to enable RNA polymerase II general transcription initiation factor activity. Involved in transcription by RNA polymerase II. Located in microtubule cytoskeleton and nucleoplasm. Part of transcription preinitiation complex.

## Recommended Dilutions

<b>WB</b>	1:500 - 1:2000
<b>IHC-P</b>	1:50 - 1:200
<b>IF/ICC</b>	1:50 - 1:200
<b>ELISA</b>	Recommended starting concentration is 1 µg/mL. Please optimize the concentration based on your specific assay requirements.

## Contact



[www.abclonal.com](http://www.abclonal.com)

## Immunogen Information

### Gene ID

2963

### Swiss Prot

P13984

### Immunogen

Recombinant fusion protein containing a sequence corresponding to amino acids 1-249 of human GTF2F2 (NP\_004119.1).

### Synonyms

BTF4; RAP30; TF2F2; TFIIIF; GTF2F2

## Product Information

### Source

Rabbit

### Isotype

IgG

### Purification

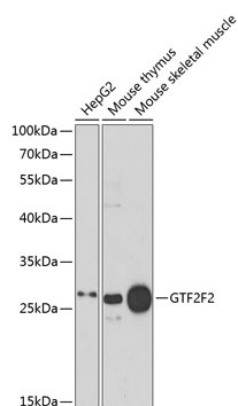
Affinity purification

### Storage

Store at -20°C. Avoid freeze / thaw cycles.

Buffer: PBS with 0.02% sodium azide,50% glycerol,pH7.3.

## Validation Data



Western blot analysis of various lysates using GTF2F2 Rabbit pAb (A13497) at 1:1000 dilution.

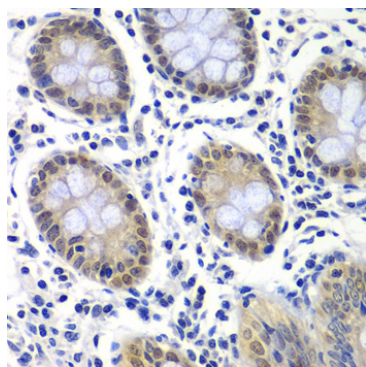
Secondary antibody: HRP-conjugated Goat anti-Rabbit IgG (H+L) (AS014) at 1:10000 dilution.

Lysates/proteins: 25µg per lane.

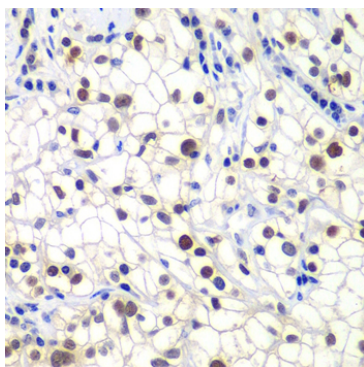
Blocking buffer: 3% nonfat dry milk in TBST.

Detection: ECL Enhanced Kit (RM00021).

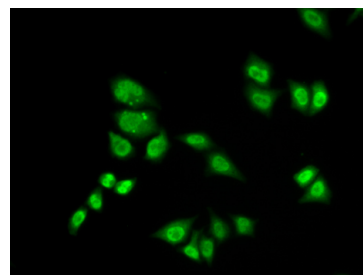
Exposure time: 30s.



Immunohistochemistry analysis of paraffin-embedded Human colon using GTF2F2 Rabbit pAb (A13497) at dilution of 1:200 (40x lens). Microwave antigen retrieval performed with 0.01M PBS Buffer (pH 7.2) prior to IHC staining.



Immunohistochemistry analysis of paraffin-embedded Human kidney cancer using GTF2F2 Rabbit pAb (A13497) at dilution of 1:200 (40x lens). Microwave antigen retrieval performed with 0.01M PBS Buffer (pH 7.2) prior to IHC staining.



Immunofluorescence analysis of A549 cells using GTF2F2 Rabbit pAb (A13497). Secondary antibody: Cy3-conjugated Goat anti-Rabbit IgG (H+L) (AS007) at 1:500 dilution.