

A13315

Leader in Biomolecular Solutions for Life Science



CD168/RHAMM Rabbit pAb

Catalog No.: A13315

Basic Information

Observed MW

84-130kDa

Calculated MW

88kDa/91kDa

Category

Polyclonal Antibody

Applications

WB,ELISA

Cross-Reactivity

Human,Mouse,Rat

Background

Predicted to enable hyaluronic acid binding activity. Predicted to be located in centrosome and cytosol. Is expressed in bulbar cushion and testis. Human ortholog(s) of this gene implicated in breast cancer. Orthologous to human HMMR (hyaluronan mediated motility receptor).

Recommended Dilutions

WB 1:500 - 1:2000

ELISA Recommended starting concentration is 1 µg/mL. Please optimize the concentration based on your specific assay requirements.

Immunogen Information

Gene ID

15366

Swiss Prot

Immunogen

Recombinant protein (or fragment). This information is considered to be commercially sensitive.

Synonyms

CD168; Rhamm; AA386826; CD168/RHAMM

Contact



www.abclonal.com

Product Information

Source

Rabbit

Isotype

IgG

Purification

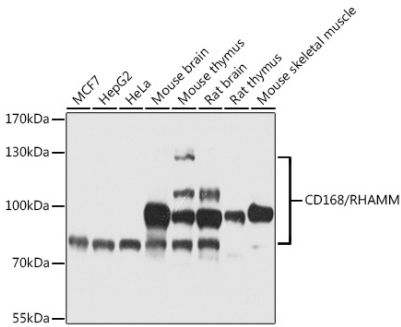
Affinity purification

Storage

Store at -20°C. Avoid freeze / thaw cycles.

Buffer: PBS with 0.02% sodium azide, 50% glycerol, pH7.3.

Validation Data



Western blot analysis of various lysates using CD168/RHAMM Rabbit pAb (A13315) at 1:1000 dilution.
Secondary antibody: HRP-conjugated Goat anti-Rabbit IgG (H+L) (AS014) at 1:10000 dilution.
Lysates/proteins: 25µg per lane.
Blocking buffer: 3% nonfat dry milk in TBST.
Detection: ECL Basic Kit (RM00020).
Exposure time: 20s.