

A13258

Leader in Biomolecular Solutions for Life Science



SKIV2L2 Rabbit pAb

Catalog No.: A13258

Basic Information

Observed MW

118kDa

Calculated MW

118kDa

Category

Polyclonal Antibody

Applications

WB,ELISA

Cross-Reactivity

Human,Mouse,Rat

Background

Enables ATP binding activity and RNA helicase activity. Involved in RNA catabolic process; cellular response to DNA damage stimulus; and maturation of 5.8S rRNA. Located in nucleoplasm. Part of TRAMP complex and catalytic step 2 spliceosome. Colocalizes with nuclear exosome (RNase complex). Biomarker of amyotrophic lateral sclerosis.

Recommended Dilutions

WB 1:500 - 1:2000

ELISA Recommended starting concentration is 1 µg/mL. Please optimize the concentration based on your specific assay requirements.

Immunogen Information

Gene ID

23517

Swiss Prot

P42285

Immunogen

Recombinant protein (or fragment). This information is considered to be commercially sensitive.

Synonyms

Dob1; Mtr4; SKIV2L2; fSAP118; KIAA0052

Contact



www.abclonal.com

Product Information

Source

Rabbit

Isotype

IgG

Purification

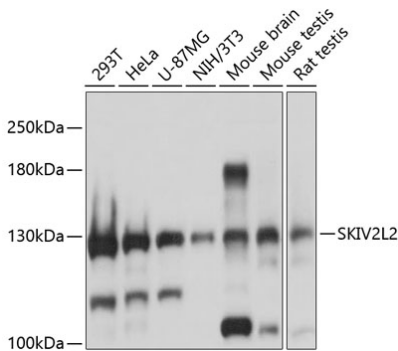
Affinity purification

Storage

Store at -20°C. Avoid freeze / thaw cycles.

Buffer: PBS with 0.02% sodium azide, 50% glycerol, pH7.3.

Validation Data



Western blot analysis of various lysates using SKIV2L2 Rabbit pAb (A13258) at 1:3000 dilution.
Secondary antibody: HRP-conjugated Goat anti-Rabbit IgG (H+L) (AS014) at 1:10000 dilution.
Lysates/proteins: 25µg per lane.
Blocking buffer: 3% nonfat dry milk in TBST.
Detection: ECL Basic Kit (RM00020).
Exposure time: 1s.