

A13257

Leader in Biomolecular Solutions for Life Science



## RRP12 Rabbit pAb

Catalog No.: A13257

### Basic Information

#### Observed MW

144kDa

#### Calculated MW

144kDa

#### Category

Polyclonal Antibody

#### Applications

WB, ELISA

#### Cross-Reactivity

Human, Mouse, Rat

### Background

Enables RNA binding activity. Predicted to be involved in rRNA processing. Located in cytosol; nucleolus; and plasma membrane.

### Recommended Dilutions

**WB** 1:1000 - 1:2000

**ELISA** Recommended starting concentration is 1 µg/mL. Please optimize the concentration based on your specific assay requirements.

### Immunogen Information

#### Gene ID

23223

#### Swiss Prot

Q5JTH9

#### Immunogen

Recombinant fusion protein containing a sequence corresponding to amino acids 1-160 of human RRP12 (NP\_055994.2).

#### Synonyms

KIAA0690; RRP12

### Contact



[www.abclonal.com](http://www.abclonal.com)

### Product Information

#### Source

Rabbit

#### Isotype

IgG

#### Purification

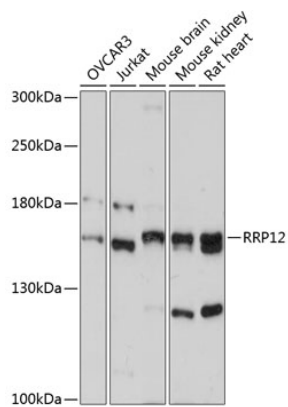
Affinity purification

#### Storage

Store at -20°C. Avoid freeze / thaw cycles.

Buffer: PBS with 0.01% thimerosal, 50% glycerol, pH7.3.

## Validation Data



Western blot analysis of various lysates using RRP12 Rabbit pAb (A13257) at 1:3000 dilution.  
Secondary antibody: HRP-conjugated Goat anti-Rabbit IgG (H+L) (AS014) at 1:10000 dilution.  
Lysates/proteins: 25µg per lane.  
Blocking buffer: 3% nonfat dry milk in TBST.  
Detection: ECL Basic Kit (RM00020).  
Exposure time: 90s.