

A13233

Leader in Biomolecular Solutions for Life Science



GTF3C6 Rabbit pAb

Catalog No.: A13233

Basic Information

Observed MW

24kDa

Calculated MW

24kDa

Category

Polyclonal Antibody

Applications

WB,ELISA

Cross-Reactivity

Human,Mouse

Background

RNA polymerases are unable to initiate RNA synthesis in the absence of additional proteins called general transcription factors (GTFs). GTFs assemble in a complex on the DNA promoter and recruit the RNA polymerase. GTF3C family proteins (e.g., GTF3C1, MIM 603246) are essential for RNA polymerase III to make a number of small nuclear and cytoplasmic RNAs, including 5S RNA (MIM 180420), tRNA, and adenovirus-associated (VA) RNA of both cellular and viral origin.

Recommended Dilutions

WB 1:2000 - 1:6000

ELISA Recommended starting concentration is 1 µg/mL. Please optimize the concentration based on your specific assay requirements.

Immunogen Information

Gene ID

112495

Swiss Prot

Q969F1

Immunogen

Recombinant fusion protein containing a sequence corresponding to amino acids 1-213 of human GTF3C6 (NP_612417.1).

Synonyms

C6orf51; TFIIC35; bA397G5.3; GTF3C6

Contact

 www.abclonal.com

Product Information

Source

Rabbit

Isotype

IgG

Purification

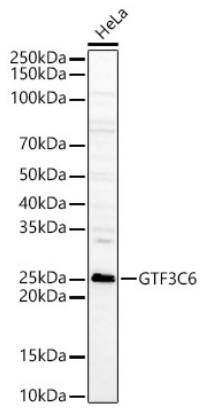
Affinity purification

Storage

Store at -20°C. Avoid freeze / thaw cycles.

Buffer: PBS with 0.05% proclin300,50% glycerol,pH7.3.

Validation Data



Western blot analysis of various lysates, using GTF3C6 Rabbit pAb (A13233) at 1:5000 dilution.

Secondary antibody: HRP-conjugated Goat anti-Rabbit IgG (H+L) (AS014) at 1:10000 dilution.

Lysates/proteins: 25 μ g per lane.

Blocking buffer: 3% nonfat dry milk in TBST.

Detection: ECL Basic Kit (RM00020).

Exposure time: 60s.