

A13226

Leader in Biomolecular Solutions for Life Science



# GABRQ Rabbit pAb

Catalog No.: A13226

## Basic Information

### Observed MW

72kDa

### Calculated MW

72kDa

### Category

Polyclonal Antibody

### Applications

WB,ELISA

### Cross-Reactivity

Human

## Background

The gamma-aminobutyric acid (GABA) A receptor is a multisubunit chloride channel that mediates the fastest inhibitory synaptic transmission in the central nervous system. This gene encodes the theta subunit of the GABA A receptor. The gene is mapped to chromosome Xq28 in a cluster of genes including those that encode the alpha 3 and epsilon subunits of the GABA A receptor.

## Recommended Dilutions

**WB** 1:500 - 1:2000

**ELISA** Recommended starting concentration is 1 µg/mL. Please optimize the concentration based on your specific assay requirements.

## Immunogen Information

### Gene ID

55879

### Swiss Prot

Q9UN88

### Immunogen

Recombinant fusion protein containing a sequence corresponding to amino acids 350-600 of human GABRQ (NP\_061028.3).

### Synonyms

THETA; GABRQ

## Contact

 [www.abclonal.com](http://www.abclonal.com)

## Product Information

### Source

Rabbit

### Isotype

IgG

### Purification

Affinity purification

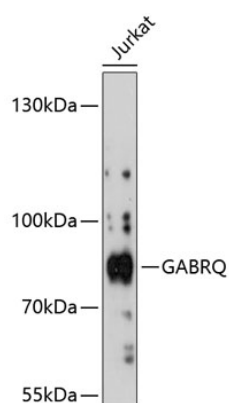
### Storage

Store at -20°C. Avoid freeze / thaw cycles.

Buffer: PBS with 0.01% thimerosal, 50% glycerol, pH7.3.

## Validation Data

---



Western blot analysis of lysates from Jurkat cells, using GABRQ Rabbit pAb (A13226) at 1:3000 dilution.

Secondary antibody: HRP-conjugated Goat anti-Rabbit IgG (H+L) (AS014) at 1:10000 dilution.

Lysates/proteins: 25µg per lane.

Blocking buffer: 3% nonfat dry milk in TBST.

Detection: ECL Basic Kit (RM00020).

Exposure time: 90s.