

A13225

Leader in Biomolecular Solutions for Life Science



LIMS2 Rabbit pAb

Catalog No.: A13225

Basic Information

Observed MW

39kDa

Calculated MW

39kDa

Category

Polyclonal Antibody

Applications

WB,ELISA

Cross-Reactivity

Human,Rat

Background

This gene encodes a member of a small family of focal adhesion proteins which interacts with ILK (integrin-linked kinase), a protein which effects protein-protein interactions with the extracellular matrix. The encoded protein has five LIM domains, each domain forming two zinc fingers, which permit interactions which regulate cell shape and migration. A pseudogene of this gene is located on chromosome 4. Multiple transcript variants encoding different isoforms have been found for this gene.

Recommended Dilutions

WB 1:500 - 1:1000

ELISA Recommended starting concentration is 1 µg/mL. Please optimize the concentration based on your specific assay requirements.

Immunogen Information

Gene ID

55679

Swiss Prot

Q7Z4I7

Immunogen

Recombinant protein (or fragment). This information is considered to be commercially sensitive.

Synonyms

LGMD2W; PINCH2; MDRCMTT; PINCH-2; LIMS2

Contact

 www.abclonal.com

Product Information

Source

Rabbit

Isotype

IgG

Purification

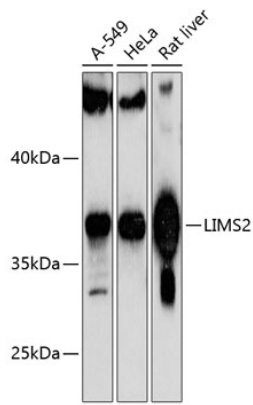
Affinity purification

Storage

Store at -20°C. Avoid freeze / thaw cycles.

Buffer: PBS with 0.01% thimerosal, 50% glycerol, pH7.3.

Validation Data



Western blot analysis of various lysates using LIMS2 Rabbit pAb (A13225) at 1:1000 dilution.
Secondary antibody: HRP-conjugated Goat anti-Rabbit IgG (H+L) (AS014) at 1:10000 dilution.
Lysates/proteins: 25µg per lane.
Blocking buffer: 3% nonfat dry milk in TBST.
Detection: ECL Basic Kit (RM00020).
Exposure time: 60s.