

A13206

Leader in Biomolecular Solutions for Life Science



# GLE1 Rabbit pAb

Catalog No.: A13206

## Basic Information

---

### Observed MW

80kDa

### Calculated MW

80kDa

### Category

Polyclonal Antibody

### Applications

WB,ELISA

### Cross-Reactivity

Mouse,Rat

## Background

---

This gene encodes a predicted 75-kDa polypeptide with high sequence and structure homology to yeast Gle1p, which is nuclear protein with a leucine-rich nuclear export sequence essential for poly(A)+RNA export. Inhibition of human GLE1L by microinjection of antibodies against GLE1L in HeLa cells resulted in inhibition of poly(A)+RNA export. Immunofluorescence studies show that GLE1L is localized at the nuclear pore complexes. This localization suggests that GLE1L may act at a terminal step in the export of mature RNA messages to the cytoplasm. Two alternatively spliced transcript variants encoding different isoforms have been found for this gene.

## Recommended Dilutions

---

WB 1:1000 - 1:2000

## Immunogen Information

---

### Gene ID

2733

### Swiss Prot

Q53GS7

### Immunogen

Recombinant fusion protein containing a sequence corresponding to amino acids 1-300 of human GLE1 (NP\_001003722.1).

### Synonyms

LCCS; CAAHC; CAAHD; GLE1L; LCCS1; hGLE1; GLE1

## Contact

---



[www.abclonal.com](http://www.abclonal.com)

## Product Information

---

### Source

Rabbit

### Isotype

IgG

### Purification

Affinity purification

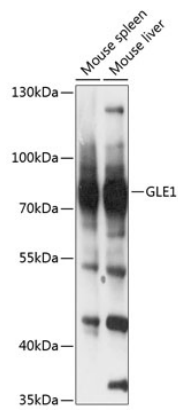
### Storage

Store at -20°C. Avoid freeze / thaw cycles.

Buffer: PBS with 0.01% thimerosal,50% glycerol,pH7.3.

## Validation Data

---



Western blot analysis of various lysates using GLE1 Rabbit pAb (A13206) at 1:3000 dilution.  
Secondary antibody: HRP Goat Anti-Rabbit IgG (H+L) (AS014) at 1:10000 dilution.  
Lysates/proteins: 25 $\mu$ g per lane.  
Blocking buffer: 3% nonfat dry milk in TBST.  
Detection: ECL Basic Kit (RM00020).  
Exposure time: 1s.