

A13171

Leader in Biomolecular Solutions for Life Science



POLR2F Rabbit pAb

Catalog No.: A13171

Basic Information

Observed MW

17kDa

Calculated MW

14kDa

Category

Polyclonal Antibody

Applications

WB, ELISA

Cross-Reactivity

Mouse

Background

This gene encodes the sixth largest subunit of RNA polymerase II, the polymerase responsible for synthesizing messenger RNA in eukaryotes. In yeast, this polymerase subunit, in combination with at least two other subunits, forms a structure that stabilizes the transcribing polymerase on the DNA template. Alternative splicing results in multiple transcript variants.

Recommended Dilutions

WB 1:500 - 1:2000

ELISA Recommended starting concentration is 1 µg/mL. Please optimize the concentration based on your specific assay requirements.

Immunogen Information

Gene ID

5435

Swiss Prot

P61218

Immunogen

Recombinant protein (or fragment). This information is considered to be commercially sensitive.

Synonyms

RPB6; POLRF; RPC15; RPABC2; RPB14.4; HRBP14.4; RPABC14.4; POLR2F

Contact

 www.abclonal.com

Product Information

Source

Rabbit

Isotype

IgG

Purification

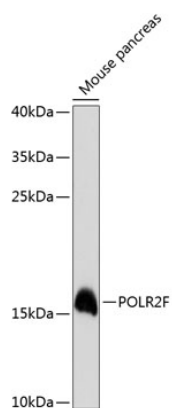
Affinity purification

Storage

Store at -20°C. Avoid freeze / thaw cycles.

Buffer: PBS with 0.01% thimerosal, 50% glycerol, pH 7.3.

Validation Data



Western blot analysis of lysates from mouse pancreas, using POLR2F Rabbit pAb (A13171) at 1:3000 dilution.

Secondary antibody: HRP-conjugated Goat anti-Rabbit IgG (H+L) (AS014) at 1:10000 dilution.

Lysates/proteins: 25µg per lane.

Blocking buffer: 3% nonfat dry milk in TBST.

Detection: ECL Basic Kit (RM00020).

Exposure time: 90s.