

A13170

Leader in Biomolecular Solutions for Life Science



# PATL1 Rabbit pAb

Catalog No.: A13170

## Basic Information

---

### Observed MW

87kDa

### Calculated MW

87kDa

### Category

Polyclonal Antibody

### Applications

WB,ELISA

### Cross-Reactivity

Mouse,Rat

## Background

---

Enables poly(G) binding activity and poly(U) RNA binding activity. Involved in P-body assembly and deadenylation-dependent decapping of nuclear-transcribed mRNA. Located in P-body and cytosol. Colocalizes with CCR4-NOT complex.

## Recommended Dilutions

---

WB 1:1000 - 1:2000

## Immunogen Information

---

### Gene ID

219988

### Swiss Prot

Q86TB9

### Immunogen

Recombinant fusion protein containing a sequence corresponding to amino acids 535-640 of human PATL1 (NP\_689929.2).

### Synonyms

Pat1b; hPat1b; PATL1

## Contact

---



[www.abclonal.com](http://www.abclonal.com)

## Product Information

---

### Source

Rabbit

### Isotype

IgG

### Purification

Affinity purification

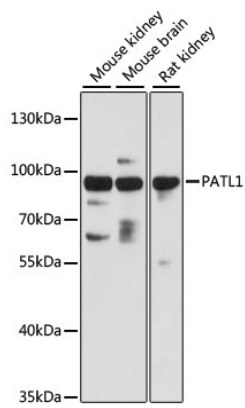
### Storage

Store at -20°C. Avoid freeze / thaw cycles.

Buffer: PBS with 0.01% thimerosal,50% glycerol,pH7.3.

## Validation Data

---



Western blot analysis of various lysates using PATL1 Rabbit pAb (A13170) at 1:3000 dilution.  
Secondary antibody: HRP Goat Anti-Rabbit IgG (H+L) (AS014) at 1:10000 dilution.  
Lysates/proteins: 25 $\mu$ g per lane.  
Blocking buffer: 3% nonfat dry milk in TBST.  
Detection: ECL Basic Kit (RM00020).  
Exposure time: 30s.