

A13154

Leader in Biomolecular Solutions for Life Science



ZFYVE16 Rabbit pAb

Catalog No.: A13154

Basic Information

Observed MW

169kDa

Calculated MW

166kDa

Category

Polyclonal Antibody

Applications

WB,ELISA

Cross-Reactivity

Human

Background

Predicted to enable 1-phosphatidylinositol binding activity and phosphatidylinositol-3,4,5-trisphosphate binding activity. Predicted to be involved in endosomal transport and protein targeting to lysosome. Predicted to be located in cytosol and early endosome. Predicted to be active in early endosome membrane. Is expressed in genitourinary system. Orthologous to human ZFYVE16 (zinc finger FYVE-type containing 16).

Recommended Dilutions

WB 1:1000 - 1:2000

ELISA Recommended starting concentration is 1 µg/mL. Please optimize the concentration based on your specific assay requirements.

Immunogen Information

Gene ID

218441

Swiss Prot

Immunogen

Recombinant protein (or fragment). This information is considered to be commercially sensitive.

Synonyms

mKIAA0305; B130031L15; B130024H06Rik; ZFYVE16

Contact

 www.abclonal.com

Product Information

Source

Rabbit

Isotype

IgG

Purification

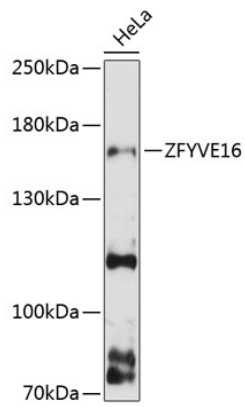
Affinity purification

Storage

Store at -20°C. Avoid freeze / thaw cycles.

Buffer: PBS with 0.01% thimerosal, 50% glycerol, pH7.3.

Validation Data



Western blot analysis of lysates from HeLa cells, using ZFYVE16 Rabbit pAb (A13154) at 1:3000 dilution.

Secondary antibody: HRP-conjugated Goat anti-Rabbit IgG (H+L) (AS014) at 1:10000 dilution.

Lysates/proteins: 25 μ g per lane.

Blocking buffer: 3% nonfat dry milk in TBST.

Detection: ECL Basic Kit (RM00020).

Exposure time: 90s.