

A1315

Leader in Biomolecular Solutions for Life Science



LTB4R Rabbit mAb

Catalog No.: A1315

Recombinant

Basic Information

Observed MW

38kDa

Calculated MW

38kDa

Category

SMab Recombinant Monoclonal
Antibody

Applications

WB,ELISA

Cross-Reactivity

Mouse,Rat

CloneNo number

ARC2557

Background

Predicted to enable G protein-coupled peptide receptor activity and leukotriene B4 receptor activity. Predicted to be involved in inflammatory response and neuropeptide signaling pathway. Predicted to act upstream of or within signal transduction. Predicted to be located in plasma membrane. Predicted to be integral component of plasma membrane.

Recommended Dilutions

WB 1:500 - 1:1000

ELISA Recommended starting concentration is 1 µg/mL. Please optimize the concentration based on your specific assay requirements.

Immunogen Information

Gene ID
1241

Swiss Prot
Q15722

Immunogen

Synthetic peptide. This information is considered to be commercially sensitive.

Synonyms

BLT1; BLTR; P2Y7; GPR16; LTBR1; P2RY7; CMKRL1; LTB4R1; LTB4R

Contact

 www.abclonal.com

Product Information

Source
Rabbit

Isotype
IgG

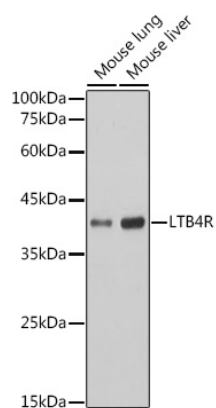
Purification
Affinity purification

Storage

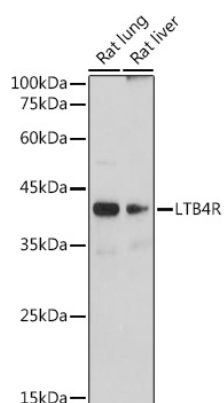
Store at -20°C. Avoid freeze / thaw cycles.

Buffer: PBS with 0.02% sodium azide,0.05% BSA,50% glycerol,pH7.3.

Validation Data



Western blot analysis of various lysates using LTB4R Rabbit mAb (A1315) at 1:1000 dilution.
Secondary antibody: HRP-conjugated Goat anti-Rabbit IgG (H+L) (AS014) at 1:10000 dilution.
Lysates/proteins: 25µg per lane.
Blocking buffer: 3% nonfat dry milk in TBST.
Detection: ECL Basic Kit (RM00020).
Exposure time: 10s.



Western blot analysis of various lysates using LTB4R Rabbit mAb (A1315) at 1:1000 dilution.
Secondary antibody: HRP-conjugated Goat anti-Rabbit IgG (H+L) (AS014) at 1:10000 dilution.
Lysates/proteins: 25µg per lane.
Blocking buffer: 3% nonfat dry milk in TBST.
Detection: ECL Basic Kit (RM00020).
Exposure time: 180s.