

A13129

Leader in Biomolecular Solutions for Life Science



REG4 Rabbit pAb

Catalog No.: A13129

1 Publications

Basic Information

Observed MW

18kDa

Calculated MW

18kDa

Category

Polyclonal Antibody

Applications

WB,ELISA

Cross-Reactivity

Mouse,Rat

Background

Enables heparin binding activity and mannan binding activity. Predicted to act upstream of or within response to bacterium. Located in cytoplasm.

Recommended Dilutions

WB 1:500 - 1:1000

ELISA Recommended starting concentration is 1 µg/mL. Please optimize the concentration based on your specific assay requirements.

Immunogen Information

Gene ID

83998

Swiss Prot

Q9BYZ8

Immunogen

Recombinant protein (or fragment). This information is considered to be commercially sensitive.

Synonyms

GISP; RELP; REG-IV; REG4

Contact



www.abclonal.com

Product Information

Source

Rabbit

Isotype

IgG

Purification

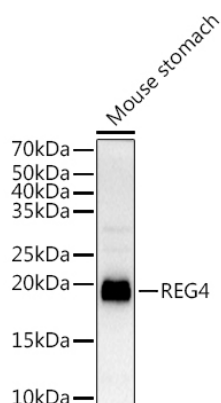
Affinity purification

Storage

Store at -20°C. Avoid freeze / thaw cycles.

Buffer: PBS with 0.01% thimerosal, 50% glycerol, pH 7.3.

Validation Data



Western blot analysis of lysates from Mouse stomach, using REG4 Rabbit pAb (A13129) at 1:1000 dilution.

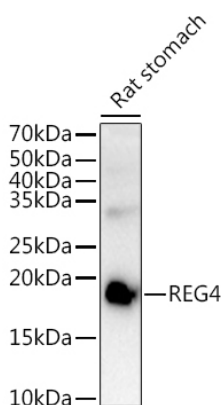
Secondary antibody: HRP-conjugated Goat anti-Rabbit IgG (H+L) (AS014) at 1:10000 dilution.

Lysates/proteins: 25µg per lane.

Blocking buffer: 3% nonfat dry milk in TBST.

Detection: ECL Basic Kit (RM00020).

Exposure time: 10s.



Western blot analysis of lysates from Rat stomach, using REG4 Rabbit pAb (A13129) at 1:1000 dilution.

Secondary antibody: HRP-conjugated Goat anti-Rabbit IgG (H+L) (AS014) at 1:10000 dilution.

Lysates/proteins: 25µg per lane.

Blocking buffer: 3% nonfat dry milk in TBST.

Detection: ECL Basic Kit (RM00020).

Exposure time: 180s.