

A13119

Leader in Biomolecular Solutions for Life Science



## RBM26 Rabbit pAb

Catalog No.: A13119

### Basic Information

#### Observed MW

113kDa

#### Calculated MW

114kDa

#### Category

Polyclonal Antibody

#### Applications

WB, ELISA

#### Cross-Reactivity

Human

### Background

Enables RNA binding activity. Predicted to be involved in mRNA processing. Predicted to be active in nucleus.

### Recommended Dilutions

**WB** 1:1000 - 1:2000

**ELISA** Recommended starting concentration is 1 µg/mL. Please optimize the concentration based on your specific assay requirements.

### Immunogen Information

#### Gene ID

64062

#### Swiss Prot

Q5T8P6

#### Immunogen

Recombinant protein (or fragment). This information is considered to be commercially sensitive.

#### Synonyms

ARRS2; SE70-2; ZC3H17; PRO1777; C13orf10; PPP1R132; RBM26

### Contact



[www.abclonal.com](http://www.abclonal.com)

### Product Information

#### Source

Rabbit

#### Isotype

IgG

#### Purification

Affinity purification

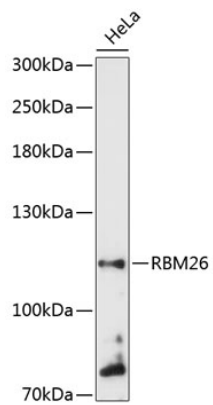
#### Storage

Store at -20°C. Avoid freeze / thaw cycles.

Buffer: PBS with 0.01% thimerosal, 50% glycerol, pH 7.3.

## Validation Data

---



Western blot analysis of lysates from HeLa cells, using RBM26 Rabbit pAb (A13119) at 1:3000 dilution.

Secondary antibody: HRP-conjugated Goat anti-Rabbit IgG (H+L) (AS014) at 1:10000 dilution.

Lysates/proteins: 25µg per lane.

Blocking buffer: 3% nonfat dry milk in TBST.

Detection: ECL Basic Kit (RM00020).

Exposure time: 90s.