

A13114

Leader in Biomolecular Solutions for Life Science



## LRRC7 Rabbit pAb

Catalog No.: A13114

### Basic Information

#### Observed MW

172kDa

#### Calculated MW

173kDa

#### Category

Polyclonal Antibody

#### Applications

WB,IF/ICC,ELISA

#### Cross-Reactivity

Human,Mouse,Rat

### Background

Predicted to be involved in several processes, including establishment or maintenance of epithelial cell apical/basal polarity; positive regulation of neuron projection development; and receptor clustering. Located in several cellular components, including centrosome; cytosol; and nucleoplasm.

### Recommended Dilutions

WB 1:500 - 1:2000

IF/ICC 1:50 - 1:200

### Immunogen Information

#### Gene ID

57554

#### Swiss Prot

Q96NW7

#### Immunogen

Recombinant fusion protein containing a sequence corresponding to amino acids 730-890 of human LRRC7 (NP\_065845.1).

#### Synonyms

DENSIN; LRRC7

### Contact



[www.abclonal.com](http://www.abclonal.com)

### Product Information

#### Source

Rabbit

#### Isotype

IgG

#### Purification

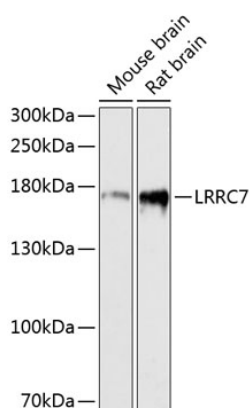
Affinity purification

#### Storage

Store at -20°C. Avoid freeze / thaw cycles.

Buffer: PBS with 0.01% thimerosal, 50% glycerol, pH7.3.

## Validation Data



Western blot analysis of various lysates using LRRC7 Rabbit pAb (A13114) at 1:3000 dilution.

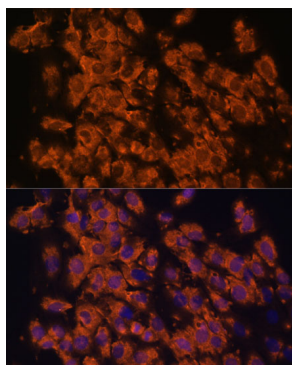
Secondary antibody: HRP Goat Anti-Rabbit IgG (H+L) (AS014) at 1:10000 dilution.

Lysates/proteins: 25µg per lane.

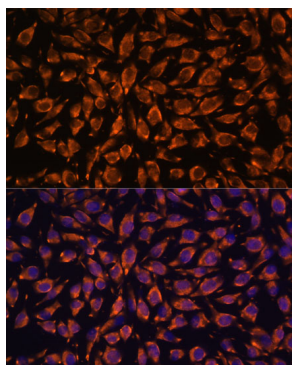
Blocking buffer: 3% nonfat dry milk in TBST.

Detection: ECL Basic Kit (RM00020).

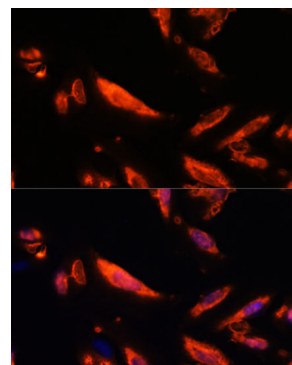
Exposure time: 90s.



Immunofluorescence analysis of C6 cells using LRRC7 Rabbit pAb (A13114) at dilution of 1:100. Secondary antibody: Cy3 Goat Anti-Rabbit IgG (H+L) (AS007) at 1:500 dilution. Blue: DAPI for nuclear staining.



Immunofluorescence analysis of L929 cells using LRRC7 Rabbit pAb (A13114) at dilution of 1:100. Secondary antibody: Cy3 Goat Anti-Rabbit IgG (H+L) (AS007) at 1:500 dilution. Blue: DAPI for nuclear staining.



Immunofluorescence analysis of U-2 OS cells using LRRC7 Rabbit pAb (A13114) at dilution of 1:100. Secondary antibody: Cy3 Goat Anti-Rabbit IgG (H+L) (AS007) at 1:500 dilution. Blue: DAPI for nuclear staining.