

A13102

Leader in Biomolecular Solutions for Life Science



HEATR1 Rabbit pAb

Catalog No.: A13102

Basic Information

Observed MW

242kDa

Calculated MW

242kDa

Category

Polyclonal Antibody

Applications

WB,ELISA

Cross-Reactivity

Human

Background

Enables RNA binding activity. Involved in positive regulation of rRNA processing and positive regulation of transcription by RNA polymerase I. Located in fibrillar center and mitochondrion. Implicated in pancreatic ductal carcinoma. Biomarker of glioblastoma.

Recommended Dilutions

WB 1:500 - 1:2000

ELISA Recommended starting concentration is 1 µg/mL. Please optimize the concentration based on your specific assay requirements.

Immunogen Information

Gene ID

55127

Swiss Prot

Q9H583

Immunogen

Recombinant protein (or fragment). This information is considered to be commercially sensitive.

Synonyms

BAP28; UTP10; HEATR1

Contact

 www.abclonal.com

Product Information

Source

Rabbit

Isotype

IgG

Purification

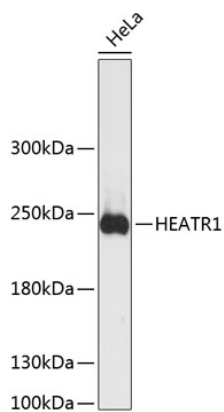
Affinity purification

Storage

Store at -20°C. Avoid freeze / thaw cycles.

Buffer: PBS with 0.01% thimerosal, 50% glycerol, pH7.3.

Validation Data



Western blot analysis of lysates from HeLa cells, using HEATR1 Rabbit pAb (A13102) at 1:3000 dilution.

Secondary antibody: HRP-conjugated Goat anti-Rabbit IgG (H+L) (AS014) at 1:10000 dilution.

Lysates/proteins: 25µg per lane.

Blocking buffer: 3% nonfat dry milk in TBST.

Detection: ECL Basic Kit (RM00020).

Exposure time: 90s.