

A13091

Leader in Biomolecular Solutions for Life Science



TUBD1 Rabbit pAb

Catalog No.: A13091

Basic Information

Observed MW

51kDa

Calculated MW

51kDa

Category

Polyclonal Antibody

Applications

WB,ELISA

Cross-Reactivity

Human,Mouse,Rat

Background

Predicted to enable GTP binding activity. Predicted to be a structural constituent of cytoskeleton. Predicted to be involved in microtubule cytoskeleton organization; mitotic cell cycle; and positive regulation of smoothened signaling pathway. Located in cytosol and nucleoplasm.

Recommended Dilutions

WB 1:1000 - 1:2000

ELISA Recommended starting concentration is 1 µg/mL. Please optimize the concentration based on your specific assay requirements.

Immunogen Information

Gene ID

51174

Swiss Prot

Q9UJT1

Immunogen

Recombinant protein (or fragment). This information is considered to be commercially sensitive.

Synonyms

TUBD; TUBD1

Contact

 www.abclonal.com

Product Information

Source

Rabbit

Isotype

IgG

Purification

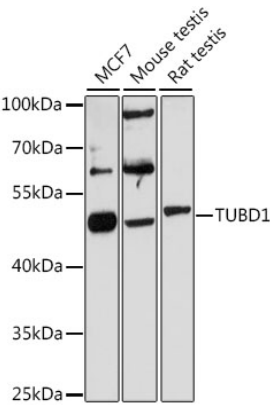
Affinity purification

Storage

Store at -20°C. Avoid freeze / thaw cycles.

Buffer: PBS with 0.01% thimerosal, 50% glycerol, pH7.3.

Validation Data



Western blot analysis of various lysates using TUBD1 Rabbit pAb (A13091) at 1:3000 dilution.
Secondary antibody: HRP-conjugated Goat anti-Rabbit IgG (H+L) (AS014) at 1:10000 dilution.
Lysates/proteins: 25µg per lane.
Blocking buffer: 3% nonfat dry milk in TBST.
Detection: ECL Basic Kit (RM00020).
Exposure time: 90s.