

A13088

Leader in Biomolecular Solutions for Life Science



ZNRD1 Rabbit pAb

Catalog No.: A13088

Basic Information

Observed MW

14kDa

Calculated MW

14kDa

Category

Polyclonal Antibody

Applications

WB, ELISA

Cross-Reactivity

Human

Background

This gene encodes a DNA-directed RNA polymerase I subunit. The encoded protein contains two potential zinc-binding motifs and may play a role in regulation of cell proliferation. The encoded protein may be involved in cancer and human immunodeficiency virus progression. Alternative splicing results in multiple transcript variants.

Recommended Dilutions

WB 1:500 - 1:2000

ELISA Recommended starting concentration is 1 µg/mL. Please optimize the concentration based on your specific assay requirements.

Immunogen Information

Gene ID
30834

Swiss Prot
Q9P1U0

Immunogen

Recombinant fusion protein containing a sequence corresponding to amino acids 1-126 of human ZNRD1 (NP_055411.1).

Synonyms

TEX6; ZR14; A12.2; HTEX6; Rpa12; ZNRD1; hZR14; HTEX-6; TCTEX6; tctex-6

Contact

 www.abclonal.com

Product Information

Source
Rabbit

Isotype
IgG

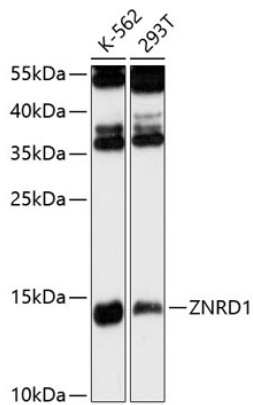
Purification
Affinity purification

Storage

Store at -20°C. Avoid freeze / thaw cycles.

Buffer: PBS with 0.01% thimerosal, 50% glycerol, pH 7.3.

Validation Data



Western blot analysis of various lysates using ZNRD1 Rabbit pAb (A13088) at 1:3000 dilution.

Secondary antibody: HRP-conjugated Goat anti-Rabbit IgG (H+L) (AS014) at 1:10000 dilution.

Lysates/proteins: 25µg per lane.

Blocking buffer: 3% nonfat dry milk in TBST.

Detection: ECL Basic Kit (RM00020).

Exposure time: 90s.