

A13048

Leader in Biomolecular Solutions for Life Science



# SPTB Rabbit pAb

Catalog No.: A13048

## Basic Information

---

### Observed MW

256kDa

### Calculated MW

246kDa

### Category

Polyclonal Antibody

### Applications

WB,ELISA

### Cross-Reactivity

Human,Mouse,Rat

## Background

---

This locus encodes a member of the spectrin gene family. Spectrin proteins, along with ankyrin, play a role in cell membrane organization and stability. The protein encoded by this locus functions in stability of erythrocyte membranes, and mutations in this gene have been associated with spherocytosis type 2, hereditary elliptocytosis, and neonatal hemolytic anemia. Alternatively spliced transcript variants have been described.

## Recommended Dilutions

---

**WB** 1:500 - 1:2000

**ELISA** Recommended starting concentration is 1 µg/mL. Please optimize the concentration based on your specific assay requirements.

## Immunogen Information

---

### Gene ID

6710

### Swiss Prot

P11277

### Immunogen

Recombinant protein (or fragment). This information is considered to be commercially sensitive.

### Synonyms

EL3; HS2; SPH2; HSPTB1; SPTB

## Contact

---

 [www.abclonal.com](http://www.abclonal.com)

## Product Information

---

### Source

Rabbit

### Isotype

IgG

### Purification

Affinity purification

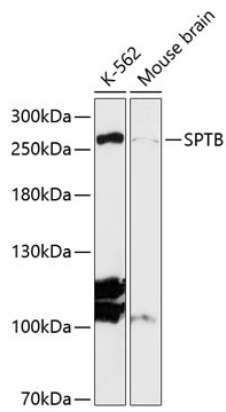
### Storage

Store at -20°C. Avoid freeze / thaw cycles.

Buffer: PBS with 0.01% thimerosal, 50% glycerol, pH7.3.

## Validation Data

---



Western blot analysis of various lysates using SPTB Rabbit pAb (A13048) at 1:3000 dilution.

Secondary antibody: HRP-conjugated Goat anti-Rabbit IgG (H+L) (AS014) at 1:10000 dilution.

Lysates/proteins: 25 $\mu$ g per lane.

Blocking buffer: 3% nonfat dry milk in TBST.

Detection: ECL Enhanced Kit (RM00021).

Exposure time: 90s.