

A12969

Leader in Biomolecular Solutions for Life Science



## WIF1 Rabbit pAb

Catalog No.: A12969

2 Publications

### Basic Information

#### Observed MW

42kDa

#### Calculated MW

42kDa

#### Category

Polyclonal Antibody

#### Applications

WB,IHC-P,ELISA

#### Cross-Reactivity

Human,Mouse,Rat

### Background

The protein encoded by this gene functions to inhibit WNT proteins, which are extracellular signaling molecules that play a role in embryonic development. This protein contains a WNT inhibitory factor (WIF) domain and five epidermal growth factor (EGF)-like domains, and is thought to be involved in mesoderm segmentation. This gene functions as a tumor suppressor gene, and has been found to be epigenetically silenced in various cancers.

### Recommended Dilutions

WB 1:1000 - 1:2000

IHC-P 1:50 - 1:200

### Immunogen Information

#### Gene ID

11197

#### Swiss Prot

Q9Y5W5

#### Immunogen

Recombinant fusion protein containing a sequence corresponding to amino acids 29-220 of human WIF1 (NP\_009122.2).

#### Synonyms

WIF-1; WIF1

### Contact



[www.abclonal.com](http://www.abclonal.com)

### Product Information

#### Source

Rabbit

#### Isotype

IgG

#### Purification

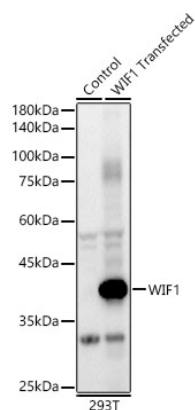
Affinity purification

#### Storage

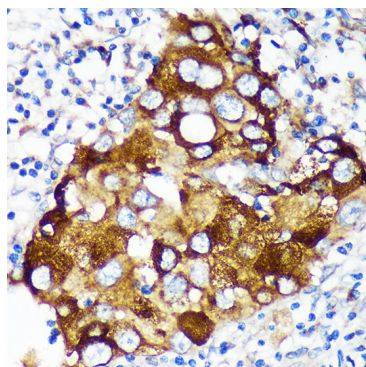
Store at -20°C. Avoid freeze / thaw cycles.

Buffer: PBS with 0.02% sodium azide, 50% glycerol, pH7.3.

## Validation Data



Western blot analysis of lysates from wild type (WT) and 293T cells transfected with WIF1 using WIF1 Rabbit pAb (A12969) at 1:500 dilution.  
Secondary antibody: HRP Goat Anti-Rabbit IgG (H+L) (AS014) at 1:10000 dilution.  
Lysates/proteins: 25µg per lane.  
Blocking buffer: 3% nonfat dry milk in TBST.  
Detection: ECL Basic Kit (RM00020).  
Exposure time: 30s.



Immunohistochemistry analysis of paraffin-embedded Human breast cancer using WIF1 Rabbit pAb (A12969) at dilution of 1:100 (40x lens). Perform microwave antigen retrieval with 10 mM PBS buffer pH 7.2 before commencing with IHC staining protocol.