

A12859

Leader in Biomolecular Solutions for Life Science



RGMB Rabbit pAb

Catalog No.: A12859

Basic Information

Observed MW

47kDa

Calculated MW

48kDa

Category

Polyclonal Antibody

Applications

WB,ELISA

Cross-Reactivity

Human,Mouse,Rat

Background

RGMB is a glycosylphosphatidylinositol (GPI)-anchored member of the repulsive guidance molecule family (see RGMA, MIM 607362) and contributes to the patterning of the developing nervous system (Samad et al., 2005 [PubMed 15671031]).

Recommended Dilutions

WB 1:500 - 1:2000

Immunogen Information

Gene ID

285704

Swiss Prot

Q6NW40

Immunogen

Recombinant fusion protein containing a sequence corresponding to amino acids 210-453 of human RGMB (NP_001012779.2).

Synonyms

DRAGON; RGMB

Contact



www.abclonal.com

Product Information

Source

Rabbit

Isotype

IgG

Purification

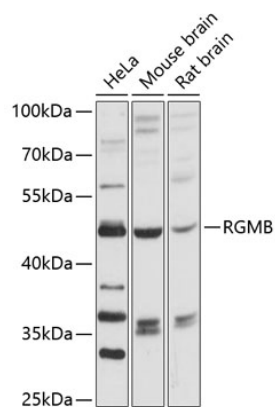
Affinity purification

Storage

Store at -20°C. Avoid freeze / thaw cycles.

Buffer: PBS with 0.01% thimerosal,50% glycerol,pH7.3.

Validation Data



Western blot analysis of various lysates using RGMB Rabbit pAb (A12859) at 1:3000 dilution.
Secondary antibody: HRP Goat Anti-Rabbit IgG (H+L) (AS014) at 1:10000 dilution.
Lysates/proteins: 25 μ g per lane.
Blocking buffer: 3% nonfat dry milk in TBST.
Detection: ECL Basic Kit (RM00020).
Exposure time: 30s.