

A12847

Leader in Biomolecular Solutions for Life Science



# SLC27A1 Rabbit pAb

Catalog No.: A12847 **4 Publications**

## Basic Information

### Observed MW

71kDa

### Calculated MW

71kDa

### Category

Polyclonal Antibody

### Applications

WB,IF/ICC,ELISA

### Cross-Reactivity

Human,Mouse,Rat

## Background

Enables biotin transmembrane transporter activity; efflux transmembrane transporter activity; and long-chain fatty acid transporter activity. Involved in several processes, including carboxylic acid transmembrane transport; glycerophospholipid biosynthetic process; and lipid transport across blood-brain barrier. Located in membrane. Part of plasma membrane.

## Recommended Dilutions

**WB** 1:1000 - 1:2000

**IF/ICC** 1:50 - 1:200

**ELISA** Recommended starting concentration is 1 µg/mL. Please optimize the concentration based on your specific assay requirements.

## Immunogen Information

### Gene ID

376497

### Swiss Prot

Q6PCB7

### Immunogen

Recombinant fusion protein containing a sequence corresponding to amino acids 510-646 of human SLC27A1 (NP\_940982.1).

### Synonyms

FATP; FATP1; ACSVL5; FATP-1; SLC27A1

## Contact

 [www.abclonal.com](http://www.abclonal.com)

## Product Information

### Source

Rabbit

### Isotype

IgG

### Purification

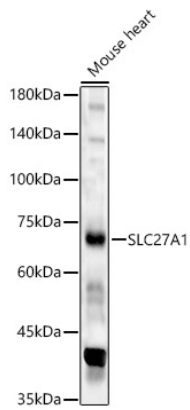
Affinity purification

### Storage

Store at -20°C. Avoid freeze / thaw cycles.

Buffer: PBS with 0.09% Sodium azide,50% glycerol,pH7.3.

## Validation Data



Western blot analysis of lysates from Mouse heart, using SLC27A1 Rabbit pAb (A12847) at 1:1000 dilution.

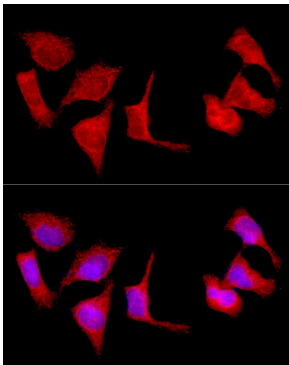
Secondary antibody: HRP-conjugated Goat anti-Rabbit IgG (H+L) (AS014) at 1:10000 dilution.

Lysates/proteins: 25µg per lane.

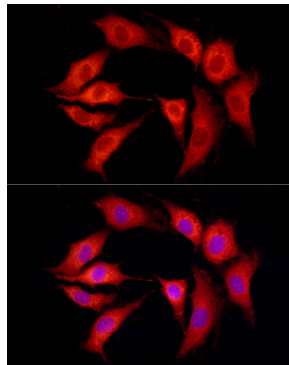
Blocking buffer: 3% nonfat dry milk in TBST.

Detection: ECL Basic Kit (RM00020).

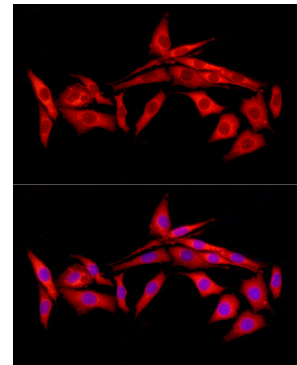
Exposure time: 120s.



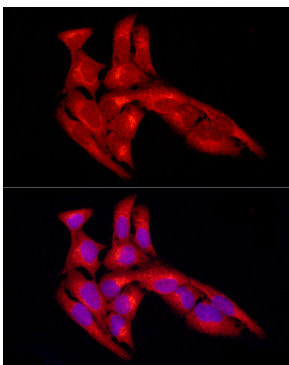
Immunofluorescence analysis of HeLa cells using SLC27A1 Rabbit pAb (A12847) at dilution of 1:100 (40x lens). Secondary antibody: Cy3-conjugated Goat anti-Rabbit IgG (H+L) (AS007) at 1:500 dilution. Blue: DAPI for nuclear staining.



Immunofluorescence analysis of NIH/3T3 cells using SLC27A1 Rabbit pAb (A12847) at dilution of 1:100 (40x lens). Secondary antibody: Cy3-conjugated Goat anti-Rabbit IgG (H+L) (AS007) at 1:500 dilution. Blue: DAPI for nuclear staining.



Immunofluorescence analysis of PC-12 cells using SLC27A1 Rabbit pAb (A12847) at dilution of 1:100 (40x lens). Secondary antibody: Cy3-conjugated Goat anti-Rabbit IgG (H+L) (AS007) at 1:500 dilution. Blue: DAPI for nuclear staining.



Immunofluorescence analysis of U2OS cells using SLC27A1 Rabbit pAb (A12847) at dilution of 1:100 (40x lens). Secondary antibody: Cy3-conjugated Goat anti-Rabbit IgG (H+L) (AS007) at 1:500 dilution. Blue: DAPI for nuclear staining.