

A12833

Leader in Biomolecular Solutions for Life Science



FAM62B Rabbit pAb

Catalog No.: A12833

Basic Information

Observed MW

102kDa

Calculated MW

102kDa

Category

Polyclonal Antibody

Applications

WB, ELISA

Cross-Reactivity

Human, Mouse

Background

Enables calcium ion binding activity; identical protein binding activity; and phospholipid binding activity. Predicted to be involved in endocytosis; endoplasmic reticulum-plasma membrane tethering; and lipid transport. Located in endoplasmic reticulum-plasma membrane contact site. Is extrinsic component of cytoplasmic side of plasma membrane; integral component of plasma membrane; and intrinsic component of endoplasmic reticulum membrane.

Recommended Dilutions

WB 1:500 - 1:2000

ELISA Recommended starting concentration is 1 µg/mL. Please optimize the concentration based on your specific assay requirements.

Immunogen Information

Gene ID

57488

Swiss Prot

A0FGR8

Immunogen

Recombinant fusion protein containing a sequence corresponding to amino acids 630-760 of human FAM62B (NP_065779.1).

Synonyms

E-Syt2; FAM62B; CHR2SYT

Contact



www.abclonal.com

Product Information

Source

Rabbit

Isotype

IgG

Purification

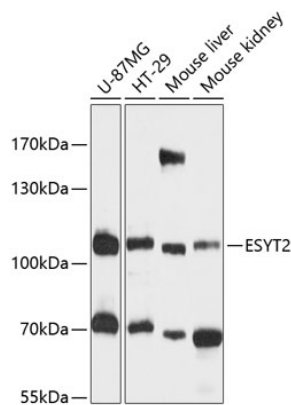
Affinity purification

Storage

Store at -20°C. Avoid freeze / thaw cycles.

Buffer: PBS with 0.01% thimerosal, 50% glycerol, pH 7.3.

Validation Data



Western blot analysis of various lysates using FAM62B Rabbit pAb (A12833) at 1:3000 dilution.
Secondary antibody: HRP-conjugated Goat anti-Rabbit IgG (H+L) (AS014) at 1:10000 dilution.
Lysates/proteins: 25µg per lane.
Blocking buffer: 3% nonfat dry milk in TBST.
Detection: ECL Basic Kit (RM00020).
Exposure time: 5s.