

A12824

Leader in Biomolecular Solutions for Life Science



WDR35 Rabbit pAb

Catalog No.: A12824

Basic Information

Observed MW

133kDa

Calculated MW

134kDa

Category

Polyclonal Antibody

Applications

WB,ELISA

Cross-Reactivity

Human,Mouse,Rat

Background

This gene encodes a member of the WD repeat protein family. WD repeats are minimally conserved regions of approximately 40 amino acids typically bracketed by gly-his and trp-asp (GH-WD), which may facilitate formation of heterotrimeric or multiprotein complexes. Members of this family are involved in a variety of cellular processes, including cell cycle progression, signal transduction, apoptosis, and gene regulation. Multiple alternatively spliced transcript variants encoding distinct isoforms have been found for this gene. Two patients with Sensenbrenner syndrome / cranioectodermal dysplasia (CED) were identified with mutations in this gene, consistent with a possible ciliary function.

Recommended Dilutions

WB 1:500 - 1:1000

Immunogen Information

Gene ID

57539

Swiss Prot

Q9P2L0

Immunogen

Recombinant fusion protein containing a sequence corresponding to amino acids 871-1170 of human WDR35 (NP_065830.2).

Synonyms

CED2; IFTA1; SRTD7; FAP118; IFT121; CFAP118; WDR35

Contact



www.abclonal.com

Product Information

Source

Rabbit

Isotype

IgG

Purification

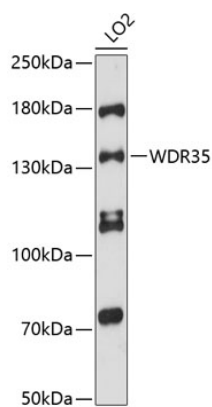
Affinity purification

Storage

Store at -20°C. Avoid freeze / thaw cycles.

Buffer: PBS with 0.01% thimerosal,50% glycerol,pH7.3.

Validation Data



Western blot analysis of lysates from LO2 cells, using WDR35 Rabbit pAb (A12824) at 1:3000 dilution.
Secondary antibody: HRP Goat Anti-Rabbit IgG (H+L) (AS014) at 1:10000 dilution.
Lysates/proteins: 25µg per lane.
Blocking buffer: 3% nonfat dry milk in TBST.
Detection: ECL Enhanced Kit (RM00021).
Exposure time: 90s.