

A12821

Leader in Biomolecular Solutions for Life Science



SNX13 Rabbit pAb

Catalog No.: A12821

Basic Information

Observed MW

112kDa

Calculated MW

112kDa

Category

Polyclonal Antibody

Applications

WB,IF/ICC,ELISA

Cross-Reactivity

Human,Mouse

Background

This gene encodes a PHOX domain- and RGS domain-containing protein that belongs to the sorting nexin (SNX) family and the regulator of G protein signaling (RGS) family. The PHOX domain is a phosphoinositide binding domain, and the SNX family members are involved in intracellular trafficking. The RGS family members are regulatory molecules that act as GTPase activating proteins for G alpha subunits of heterotrimeric G proteins. The RGS domain of this protein interacts with G alpha(s), accelerates its GTP hydrolysis, and attenuates G alpha(s)-mediated signaling. Overexpression of this protein delays lysosomal degradation of the epidermal growth factor receptor. Because of its bifunctional role, this protein may link heterotrimeric G protein signaling and vesicular trafficking.

Recommended Dilutions

WB 1:500 - 1:2000

IF/ICC 1:50 - 1:200

ELISA Recommended starting concentration is 1 µg/mL. Please optimize the concentration based on your specific assay requirements.

Immunogen Information

Gene ID

23161

Swiss Prot

Q9Y5W8

Immunogen

Recombinant fusion protein containing a sequence corresponding to amino acids 50-230 of human SNX13 (NP_055947.1).

Synonyms

RGS-PX1; SNX13

Contact

 www.abclonal.com

Product Information

Source

Rabbit

Isotype

IgG

Purification

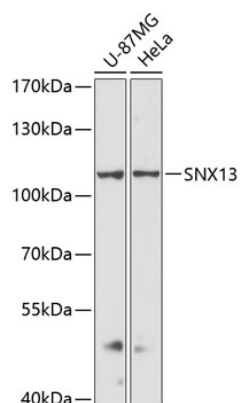
Affinity purification

Storage

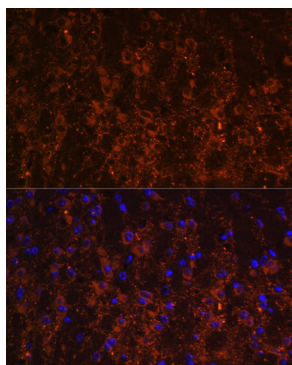
Store at -20°C. Avoid freeze / thaw cycles.

Buffer: PBS with 0.01% thimerosal, 50% glycerol, pH7.3.

Validation Data



Western blot analysis of various lysates using SNX13 Rabbit pAb (A12821) at 1:3000 dilution.
Secondary antibody: HRP-conjugated Goat anti-Rabbit IgG (H+L) (AS014) at 1:10000 dilution.
Lysates/proteins: 25µg per lane.
Blocking buffer: 3% nonfat dry milk in TBST.
Detection: ECL Basic Kit (RM00020).
Exposure time: 90s.



Immunofluorescence analysis of paraffin-embedded mouse brain using SNX13 Rabbit pAb (A12821) at dilution of 1:100. Secondary antibody: Cy3-conjugated Goat anti-Rabbit IgG (H+L) (AS007) at 1:500 dilution. Blue: DAPI for nuclear staining.