

A12759

Leader in Biomolecular Solutions for Life Science



## EPB41L3 Rabbit pAb

Catalog No.: A12759

### Basic Information

#### Observed MW

121kDa

#### Calculated MW

121kDa

#### Category

Polyclonal Antibody

#### Applications

WB, ELISA

#### Cross-Reactivity

Human, Mouse

### Background

Predicted to enable cytoskeletal protein-membrane anchor activity. Predicted to be a structural constituent of cytoskeleton. Predicted to be involved in several processes, including nervous system development; paranodal junction maintenance; and protein localization to paranode region of axon. Located in cell-cell junction and plasma membrane. Biomarker of meningioma.

### Recommended Dilutions

**WB** 1:500 - 1:2000

**ELISA** Recommended starting concentration is 1 µg/mL. Please optimize the concentration based on your specific assay requirements.

### Immunogen Information

#### Gene ID

23136

#### Swiss Prot

Q9Y2J2

#### Immunogen

Recombinant fusion protein containing a sequence corresponding to amino acids 656-865 of human EPB41L3 (NP\_001268463.1).

#### Synonyms

4.1B; DAL1; DAL-1; EPB41L3

### Contact



[www.abclonal.com](http://www.abclonal.com)

### Product Information

#### Source

Rabbit

#### Isotype

IgG

#### Purification

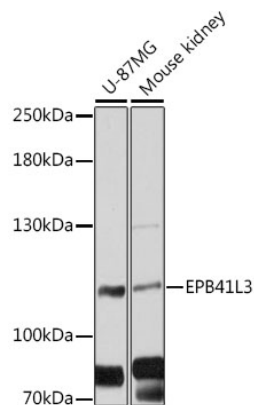
Affinity purification

#### Storage

Store at -20°C. Avoid freeze / thaw cycles.

Buffer: PBS with 0.01% thimerosal, 50% glycerol, pH 7.3.

## Validation Data



Western blot analysis of various lysates using EPB41L3 Rabbit pAb (A12759) at 1:3000 dilution.  
Secondary antibody: HRP-conjugated Goat anti-Rabbit IgG (H+L) (AS014) at 1:10000 dilution.  
Lysates/proteins: 25µg per lane.  
Blocking buffer: 3% nonfat dry milk in TBST.  
Detection: ECL Basic Kit (RM00020).  
Exposure time: 30s.