

A1273

Leader in Biomolecular Solutions for Life Science



UQCRB Rabbit pAb

Catalog No.: A1273

Basic Information

Observed MW

14kDa

Calculated MW

14kDa

Category

Polyclonal Antibody

Applications

WB,ELISA

Cross-Reactivity

Human,Mouse,Rat

Background

This gene encodes a subunit of the ubiquinol-cytochrome c oxidoreductase complex, which consists of one mitochondrial-encoded and 10 nuclear-encoded subunits. The protein encoded by this gene binds ubiquinone and participates in the transfer of electrons when ubiquinone is bound. This protein plays an important role in hypoxia-induced angiogenesis through mitochondrial reactive oxygen species-mediated signaling. Mutations in this gene are associated with mitochondrial complex III deficiency. Alternatively spliced transcript variants have been found for this gene. Related pseudogenes have been identified on chromosomes 1, 5 and X.

Recommended Dilutions

WB 1:1000 - 1:2000

ELISA Recommended starting concentration is 1 µg/mL. Please optimize the concentration based on your specific assay requirements.

Immunogen Information

Gene ID

7381

Swiss Prot

P14927

Immunogen

Recombinant fusion protein containing a sequence corresponding to amino acids 1-111 of human UQCRB (NP_006285.1).

Synonyms

QPC; QCR7; QP-C; UQBC; UQBP; UQPC; UQCR6; MC3DN3; UQCRB

Contact

 www.abclonal.com

Product Information

Source

Rabbit

Isotype

IgG

Purification

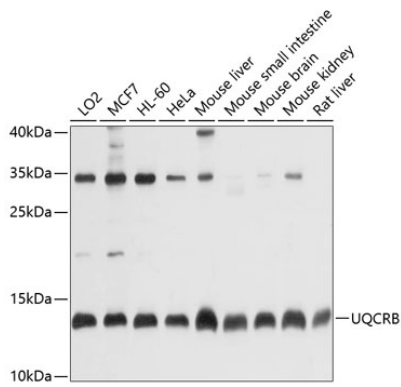
Affinity purification

Storage

Store at -20°C. Avoid freeze / thaw cycles.

Buffer: PBS with 0.02% sodium azide,50% glycerol,pH7.3.

Validation Data



Western blot analysis of various lysates using UQCRB Rabbit pAb (A1273) at 1:1000 dilution.
Secondary antibody: HRP-conjugated Goat anti-Rabbit IgG (H+L) (AS014) at 1:10000 dilution.
Lysates/proteins: 25µg per lane.
Blocking buffer: 3% nonfat dry milk in TBST.
Detection: ECL Basic Kit (RM00020).
Exposure time: 10s.