

A12706

Leader in Biomolecular Solutions for Life Science



# CD248 Rabbit pAb

Catalog No.: A12706

## Basic Information

---

### Observed MW

81kDa

### Calculated MW

81kDa

### Category

Polyclonal Antibody

### Applications

WB,ELISA

### Cross-Reactivity

Human

## Background

---

Predicted to enable extracellular matrix binding activity and extracellular matrix protein binding activity. Predicted to be involved in cell migration. Predicted to act upstream of or within several processes, including anatomical structure regression; lymph node development; and positive regulation of endothelial cell apoptotic process. Located in extracellular exosome.

## Recommended Dilutions

---

**WB** 1:1000 - 1:5000

**ELISA** Recommended starting concentration is 1 µg/mL. Please optimize the concentration based on your specific assay requirements.

## Immunogen Information

---

### Gene ID

57124

### Swiss Prot

Q9HCU0

### Immunogen

Recombinant protein (or fragment). This information is considered to be commercially sensitive.

### Synonyms

TEM1; CD164L1; CD248

## Contact

---

 [www.abclonal.com](http://www.abclonal.com)

## Product Information

---

### Source

Rabbit

### Isotype

IgG

### Purification

Affinity purification

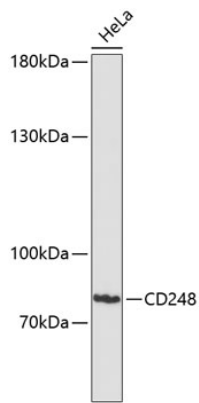
### Storage

Store at -20°C. Avoid freeze / thaw cycles.

Buffer: PBS containing 50% glycerol, preserved with proclin300 or sodium azide (as specified on the Certificate of Analysis), pH 7.3.

## Validation Data

---



Western blot analysis of lysates from HeLa cells, using CD248 Rabbit pAb (A12706) at 1:3000 dilution.

Secondary antibody: HRP-conjugated Goat anti-Rabbit IgG (H+L) (AS014) at 1:10000 dilution.

Lysates/proteins: 25µg per lane.

Blocking buffer: 3% nonfat dry milk in TBST.

Detection: ECL Enhanced Kit (RM00021).

Exposure time: 90s.