

A12676

Leader in Biomolecular Solutions for Life Science



# SLC1A5 Rabbit pAb

Catalog No.: A12676

## Basic Information

---

### Observed MW

57kDa

### Calculated MW

57kDa

### Category

Polyclonal Antibody

### Applications

WB,ELISA

### Cross-Reactivity

Rat

## Background

---

The SLC1A5 gene encodes a sodium-dependent neutral amino acid transporter that can act as a receptor for RD114/type D retrovirus (Larriba et al., 2001 [PubMed 11781704]).

## Recommended Dilutions

---

WB 1:500 - 1:2000

## Immunogen Information

---

### Gene ID

6510

### Swiss Prot

Q15758

### Immunogen

Recombinant fusion protein containing a sequence corresponding to amino acids 1-100 of human SLC1A5 (NP\_005619.1).

### Synonyms

R16; AAAT; ATBO; M7V1; RDRC; ASCT2; M7VS1; SLC1A5

## Contact

---



[www.abclonal.com](http://www.abclonal.com)

## Product Information

---

### Source

Rabbit

### Isotype

IgG

### Purification

Affinity purification

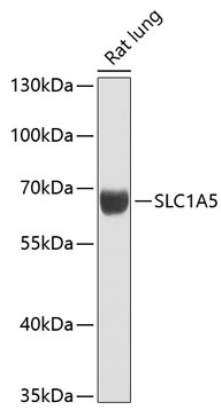
### Storage

Store at -20°C. Avoid freeze / thaw cycles.

Buffer: PBS with 0.02% sodium azide,50% glycerol,pH7.3.

## Validation Data

---



Western blot analysis of extracts of rat lung, using SLC1A5 antibody (A12676) at 1:1000 dilution.  
Secondary antibody: HRP Goat Anti-Rabbit IgG (H+L) (AS014) at 1:10000 dilution.  
Lysates/proteins: 25 $\mu$ g per lane.  
Blocking buffer: 3% nonfat dry milk in TBST.  
Detection: ECL Basic Kit (RM00020).  
Exposure time: 90s.