

A12675

Leader in Biomolecular Solutions for Life Science



ITM2C Rabbit pAb

Catalog No.: A12675

Basic Information

Observed MW

30kDa

Calculated MW

30kDa

Category

Polyclonal Antibody

Applications

WB,ELISA

Cross-Reactivity

Mouse,Rat

Background

Enables amyloid-beta binding activity. Involved in negative regulation of neuron projection development and neuron differentiation. Located in several cellular components, including Golgi apparatus; lysosome; and perinuclear region of cytoplasm.

Recommended Dilutions

WB 1:500 - 1:2000

ELISA Recommended starting concentration is 1 µg/mL. Please optimize the concentration based on your specific assay requirements.

Immunogen Information

Gene ID

81618

Swiss Prot

Q9NQX7

Immunogen

Recombinant protein (or fragment). This information is considered to be commercially sensitive.

Synonyms

E25; BRI3; E25C; ITM3; BRICD2C; ITM2C

Contact



www.abclonal.com

Product Information

Source

Rabbit

Isotype

IgG

Purification

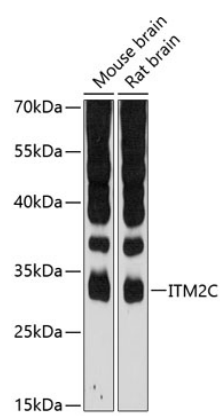
Affinity purification

Storage

Store at -20°C. Avoid freeze / thaw cycles.

Buffer: PBS with 0.01% thimerosal, 50% glycerol, pH 7.3.

Validation Data



Western blot analysis of various lysates using ITM2C Rabbit pAb (A12675) at 1:3000 dilution.
Secondary antibody: HRP-conjugated Goat anti-Rabbit IgG (H+L) (AS014) at 1:10000 dilution.
Lysates/proteins: 25µg per lane.
Blocking buffer: 3% nonfat dry milk in TBST.
Detection: ECL Basic Kit (RM00020).
Exposure time: 90s.