

A12651

Leader in Biomolecular Solutions for Life Science



HEMK1 Rabbit pAb

Catalog No.: A12651

Basic Information

Observed MW

38kDa

Calculated MW

38kDa

Category

Polyclonal Antibody

Applications

WB,ELISA

Cross-Reactivity

Mouse

Background

Predicted to enable DNA binding activity and methyltransferase activity. Predicted to be involved in DNA methylation and protein methylation. Predicted to be located in mitochondrion.

Recommended Dilutions

WB 1:1000 - 1:3000

ELISA Recommended starting concentration is 1 µg/mL. Please optimize the concentration based on your specific assay requirements.

Immunogen Information

Gene ID

51409

Swiss Prot

Q9Y5R4

Immunogen

Recombinant protein (or fragment). This information is considered to be commercially sensitive.

Synonyms

HEMK; MTQ1; MPRMC; HEMK1

Contact

 www.abclonal.com

Product Information

Source

Rabbit

Isotype

IgG

Purification

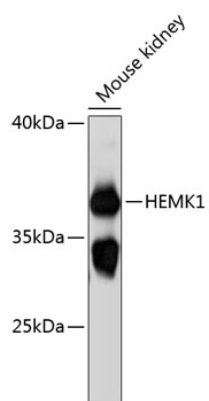
Affinity purification

Storage

Store at -20°C. Avoid freeze / thaw cycles.

Buffer: PBS with 0.01% thimerosal, 50% glycerol, pH7.3.

Validation Data



Western blot analysis of lysates from mouse kidney, using HEMK1 Rabbit pAb (A12651) at 1:3000 dilution.

Secondary antibody: HRP-conjugated Goat anti-Rabbit IgG (H+L) (AS014) at 1:10000 dilution.

Lysates/proteins: 25µg per lane.

Blocking buffer: 3% nonfat dry milk in TBST.

Detection: ECL Basic Kit (RM00020).

Exposure time: 30s.