

A12646

Leader in Biomolecular Solutions for Life Science



RAG1 Rabbit pAb

Catalog No.: A12646

Basic Information

Observed MW

110kDa

Calculated MW

119kDa

Category

Polyclonal Antibody

Applications

WB,ELISA

Cross-Reactivity

Mouse

Background

The protein encoded by this gene is involved in activation of immunoglobulin V-D-J recombination. The encoded protein is involved in recognition of the DNA substrate, but stable binding and cleavage activity also requires RAG2. Defects in this gene can be the cause of several diseases.

Recommended Dilutions

WB 1:1000 - 1:3000

ELISA Recommended starting concentration is 1 µg/mL. Please optimize the concentration based on your specific assay requirements.

Immunogen Information

Gene ID

5896

Swiss Prot

P15918

Immunogen

Recombinant fusion protein containing a sequence corresponding to amino acids 1-270 of human RAG1 (NP_000439.1).

Synonyms

RAG-1; RNF74; RAG1

Contact

 www.abclonal.com

Product Information

Source

Rabbit

Isotype

IgG

Purification

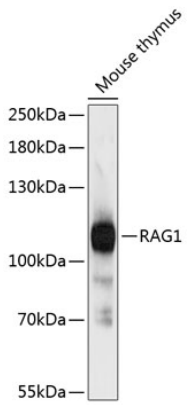
Affinity purification

Storage

Store at -20°C. Avoid freeze / thaw cycles.

Buffer: PBS with 0.01% thimerosal, 50% glycerol, pH7.3.

Validation Data



Western blot analysis of lysates from mouse thymus, using RAG1 Rabbit pAb (A12646) at 1:3000 dilution.

Secondary antibody: HRP-conjugated Goat anti-Rabbit IgG (H+L) (AS014) at 1:10000 dilution.

Lysates/proteins: 25 μ g per lane.

Blocking buffer: 3% nonfat dry milk in TBST.

Detection: ECL Basic Kit (RM00020).

Exposure time: 90s.