

A12635

Leader in Biomolecular Solutions for Life Science



EVC Rabbit pAb

Catalog No.: A12635

Basic Information

Observed MW

112kDa

Calculated MW

112kDa

Category

Polyclonal Antibody

Applications

WB, ELISA

Cross-Reactivity

Mouse

Background

This gene encodes a protein containing a leucine zipper and a transmembrane domain. This gene has been implicated in both Ellis-van Creveld syndrome (EVC) and Weyers acrodermal dysostosis.

Recommended Dilutions

WB 1:1000 - 1:3000

ELISA Recommended starting concentration is 1 µg/mL. Please optimize the concentration based on your specific assay requirements.

Immunogen Information

Gene ID

2121

Swiss Prot

P57679

Immunogen

Recombinant fusion protein containing a sequence corresponding to amino acids 743-992 of human EVC (NP_714928.1).

Synonyms

EVC1; EVCL; DWF-1; EVC

Contact

 www.abclonal.com

Product Information

Source

Rabbit

Isotype

IgG

Purification

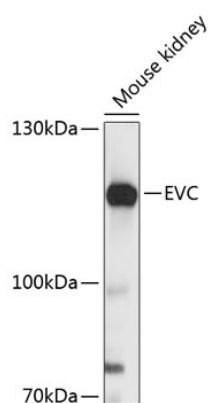
Affinity purification

Storage

Store at -20°C. Avoid freeze / thaw cycles.

Buffer: PBS with 0.01% thimerosal, 50% glycerol, pH 7.3.

Validation Data



Western blot analysis of lysates from mouse kidney, using EVC Rabbit pAb (A12635) at 1:3000 dilution.

Secondary antibody: HRP-conjugated Goat anti-Rabbit IgG (H+L) (AS014) at 1:10000 dilution.

Lysates/proteins: 25µg per lane.

Blocking buffer: 3% nonfat dry milk in TBST.

Detection: ECL Basic Kit (RM00020).

Exposure time: 10s.