

A12629

Leader in Biomolecular Solutions for Life Science



ADGRD1 Rabbit pAb

Catalog No.: A12629

Basic Information

Observed MW

105kDa

Calculated MW

97kDa

Category

Polyclonal Antibody

Applications

WB,ELISA

Cross-Reactivity

Human,Mouse,Rat

Background

The adhesion G-protein-coupled receptors (GPCRs), including GPR133, are membrane-bound proteins with long N termini containing multiple domains. GPCRs, or GPRs, contain 7 transmembrane domains and transduce extracellular signals through heterotrimeric G proteins (summary by Bjarnadottir et al., 2004 [PubMed 15203201]).

Recommended Dilutions

WB 1:500 - 1:2000

ELISA Recommended starting concentration is 1 µg/mL. Please optimize the concentration based on your specific assay requirements.

Immunogen Information

Gene ID

283383

Swiss Prot

Q6QNK2

Immunogen

Recombinant fusion protein containing a sequence corresponding to amino acids 805-874 of human ADGRD1 (NP_942122.2).

Synonyms

PGR25; GPR133; ADGRD1

Contact

 www.abclonal.com

Product Information

Source

Rabbit

Isotype

IgG

Purification

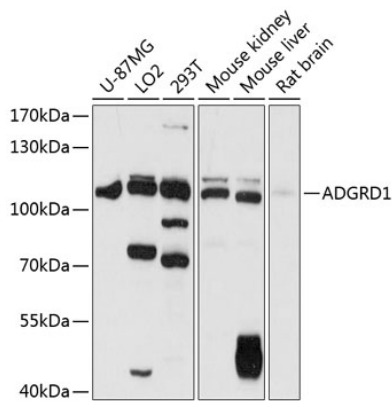
Affinity purification

Storage

Store at -20°C. Avoid freeze / thaw cycles.

Buffer: PBS with 0.01% thimerosal, 50% glycerol, pH7.3.

Validation Data



Western blot analysis of various lysates using ADGRD1 Rabbit pAb (A12629) at 1:1000 dilution.
Secondary antibody: HRP-conjugated Goat anti-Rabbit IgG (H+L) (AS014) at 1:10000 dilution.
Lysates/proteins: 25µg per lane.
Blocking buffer: 3% nonfat dry milk in TBST.
Detection: ECL Basic Kit (RM00020).
Exposure time: 5s.