

A12619

Leader in Biomolecular Solutions for Life Science



# Gm13125 Rabbit pAb

Catalog No.: A12619

## Basic Information

### Observed MW

55kDa

### Calculated MW

55kDa

### Category

Polyclonal Antibody

### Applications

WB,IHC-P,ELISA

### Cross-Reactivity

Human,Mouse,Rat

## Background

Predicted to enable ubiquitin ligase-substrate adaptor activity. Predicted to be part of Cul2-RING ubiquitin ligase complex. Predicted to be active in cytoplasm. Orthologous to several human genes including PRAMEF1 (PRAME family member 1); PRAMEF10 (PRAME family member 10); and PRAMEF11 (PRAME family member 11).

## Recommended Dilutions

**WB** 1:500 - 1:2000

**IHC-P** 1:50 - 1:200

**ELISA** Recommended starting concentration is 1 µg/mL. Please optimize the concentration based on your specific assay requirements.

## Immunogen Information

### Gene ID

627009

### Swiss Prot

Q5VT98

### Immunogen

Recombinant fusion protein containing a sequence corresponding to amino acids 1-477 of mouse Gm13125 (NP\_001108549.1).

### Synonyms

Gm13125; EG627009; Pramef20

## Contact

 [www.abclonal.com](http://www.abclonal.com)

## Product Information

### Source

Rabbit

### Isotype

IgG

### Purification

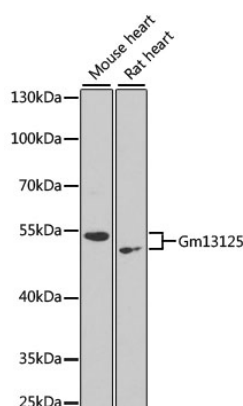
Affinity purification

### Storage

Store at -20°C. Avoid freeze / thaw cycles.

Buffer: PBS with 0.02% sodium azide,50% glycerol,pH7.3.

## Validation Data



Western blot analysis of various lysates using Gm13125 Rabbit pAb (A12619) at 1:1000 dilution.

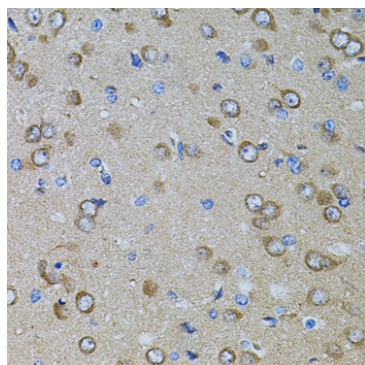
Secondary antibody: HRP-conjugated Goat anti-Rabbit IgG (H+L) (AS014) at 1:10000 dilution.

Lysates/proteins: 25µg per lane.

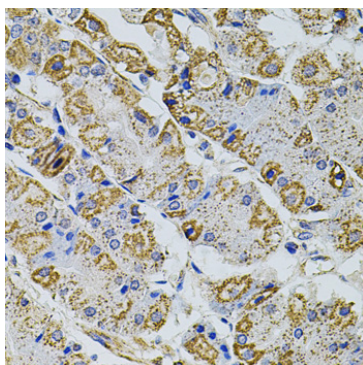
Blocking buffer: 3% nonfat dry milk in TBST.

Detection: ECL Enhanced Kit (RM00021).

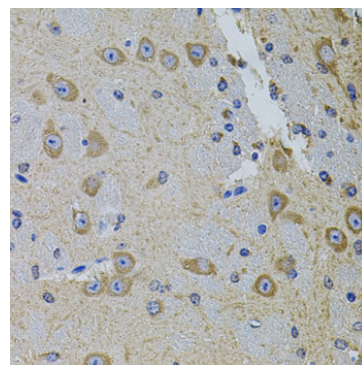
Exposure time: 90s.



Immunohistochemistry analysis of paraffin-embedded Rat brain using Gm13125 Rabbit pAb (A12619) at dilution of 1:100 (40x lens).  
Microwave antigen retrieval performed with 0.01M PBS Buffer (pH 7.2) prior to IHC staining.



Immunohistochemistry analysis of paraffin-embedded Human stomach using Gm13125 Rabbit pAb (A12619) at dilution of 1:100 (40x lens).  
Microwave antigen retrieval performed with 0.01M PBS Buffer (pH 7.2) prior to IHC staining.



Immunohistochemistry analysis of paraffin-embedded Mouse brain using Gm13125 Rabbit pAb (A12619) at dilution of 1:100 (40x lens).  
Microwave antigen retrieval performed with 0.01M PBS Buffer (pH 7.2) prior to IHC staining.